

Deadly Populism: How Local Political Outsiders Drive Duterte's War on Drugs in the Philippines

Nico Ravanilla, Renard Sexton, & Dotan Haim

February 11, 2020

Abstract

Around the world, populists have won elections on the strength of crowd-pleasing, but norm-defying, policy proposals. Although effective at mobilizing support at election time, these policies are often difficult to implement in practice because populists lack allies throughout the political system. Examining President Rodrigo Duterte's brutal "War on Drugs" in the Philippines, we find that mayors excluded from existing establishment patronage networks filled this critical implementation gap for the Duterte administration. Employing regression discontinuity and difference-in-differences approaches, we demonstrate that outsider mayors received 40 percent lower public works appropriations, and, in turn, executed Duterte's drug war much more aggressively. Outsider-led municipalities had 40 percent more anti-drug incidents and 60 percent more extra-judicial killings by police. The results illustrate an important trade-off between patronage politics and corruption (politics-as-usual), and violent democratic backsliding.

Word count: 11,341

Nico Ravanilla is Assistant Professor, School of Global Policy and Strategy, UCSD (nravanilla@ucsd.edu). Renard Sexton is Assistant Professor, Department of Political Science, Emory University (renard.sexton@emory.edu). Dotan Haim is Assistant Professor, School of International Service, American University (haim@american.edu).

Ravanilla and Sexton initiated the project and developed the conceptual framework. They also constructed the research design and conducted all core empirical analyses. Ravanilla, Sexton and Haim contributed to developing and writing the paper's theory, collecting and preparing the data used in the analyses, and completing the manuscript.

We are grateful to Cesi Cruz, Jan Pierskalla, Allen Hicken, Stephan Haggard, Craig McIntosh, Kikue Hamayotsu, Mai Nguyen, Eitan Paul, Jeff Friedman, Felix Hartmann, Victoria Shen, Nancy Gilson, and audiences at Dartmouth College, University of California San Diego, University of the Philippines School of Economics, American Political Science Association, Southeast Asia Research Group, and Empirical Studies of Conflict for detailed and helpful feedback.

1 Introduction

In recent years, elections have swept political “outsiders” into power across a wide range of countries, including Andrés Manuel López Obrador in Mexico, Jair Bolsonaro in Brazil, and Rodrigo Duterte in the Philippines. While the nature of these leaders’ policy platforms differs significantly, their campaigns all rely on charismatic appeals and rhetoric centered on bucking “entrenched,” “elite,” or “establishment” political systems (Akkerman et al., 2014).¹ This rhetoric serves a key purpose for popular mobilization, but it also foreshadows an important challenge facing outsiders once they take office. When politicians enter office, they must contend with political and bureaucratic impediments that limit their ability to enact policy change, especially for high-profile, signature policies that violate constitutional and even democratic norms. This process is likely to be especially difficult for political outsiders because established elites have a strong incentive to resist changes to politics-as-usual.

How, then, do outsider national leaders overcome institutional opposition to implement norm-defying, constitutionally dubious policy initiatives? We posit that a non-establishment leader can push forward their policy agenda because of the incentives facing local politicians who are excluded from existing patronage or party networks, leading them to bandwagon on the leader’s signature policy, even if they did not win office by campaigning for this policy in the first place. Doing so provides an alternative, if risky, pathway to retaining local office that does not rely on being well-connected to pre-existing political networks.

We test this argument by exploiting competitive mayoral elections between insider and outsider candidates during the 2016 Philippines election campaign.² Employing both regression discontinuity and difference-in-differences approaches with geo-coded data from Philippine National Police (PNP) crime blotter reports and ACLED data on extra-judicial killings, we find that mayors from independent or minority parties executed President Rodrigo Duterte’s signature “War on Drugs” much more aggressively than those from the establishment Liberal Party.³ Outsider-led municipalities filed 40 percent more anti-drug blotter reports and were 60 percent more likely to experience a PNP officer killing a drug suspect. On other peace and security measures, such as total crime rates, homicides, or property crime, insider and outsider mayors’

¹It is this pro-people, anti-elite ideology that many scholars use to define populism. Periods of populism — where ‘majoritarian’ democracy treads on ‘civil rights’ democracy — are common features of unconsolidated democracy, what Dan Slater (2013) calls democratic “careening.”

²Throughout the paper we use the terms *insider* and *establishment* interchangeably to refer to politicians who do not have access to existing patronage networks and party support. We also use *outsider* and *non-establishment* as synonyms.

³The Liberal Party, aligned with the previous President Benigno Aquino III, made up 46% of mayors after the 2016 election.

records look indistinguishable, and the background census characteristics of these municipalities are close to identical.

These effects are found only within competitive races; outsiders that win by large margins do not have an incentive to appeal to the national authorities by engaging aggressively in the drug war because they are likely to win reelection on their own. Indeed, we find a precisely estimated null effect in non-competitive races.⁴

A likely mechanism driving these results is that outsider mayors have limited access to the traditional source of sustained political power. Compared to their establishment counterparts, outsider mayors received 40 percent less in public works procurement funds, the primary source for patronage and pork for local politicians. This difference is driven largely by two categories of spending — roads projects and flood abatement — that are well known sources of kickbacks and nepotistic contracting, both of which are often used to facilitate clientelist exchanges.

Finally, we show that throwing their weight behind drug war implementation had the expected electoral benefit for local outsiders. Despite their relative undersupply of resources needed to build support through patronage politics, outsider mayors performed about 5 percentage points better than insiders in the May 2019 midterm election. This is a far cry from previous cycles, where outsiders were about 20 percentage points less likely than insiders to win re-election. Although both Liberal Party and outsider mayors eventually tried to switch parties to join President Duterte's PDP-LABAN, outsiders were substantially more likely to win re-election as part of the Duterte's alliance. As the second half of the Duterte presidency begins in 2020, we see that the former outsiders, having shown their loyalty to Duterte via the drug war, are establishing a new insider patronage network under the PDP-LABAN banner.

We acknowledge that scholars of patronage politics think about “insiders” and “outsiders” in a variety of ways, some of which do not cleanly correspond to the definition we use here. Those familiar with the Philippine context may be concerned that because party names are fluid, using party labels appears to be a counter-intuitive choice. For the purposes of this study, however, we define insiders and outsiders in a functional manner: insiders are those who in 2016 had access to a network with preferential access to pork largess. As we explain in greater detail below, we believe that for the early Duterte years and three years prior, the insider/outsider designation oriented around the Liberal Party provides good inferential leverage for our research question.

Our findings speak to an enduring and recently revitalized debate about populist strategies and their implications for national and local democratic politics (Riker, 1982; Mudde, 2007; Inglehart and Norris, 2016). Much of the discussion has revolved around the faultlines that give rise to populist movements, and why they succeed or fail at attaining power. (Sachs, 1989; Seligson, 2007; Mudde, 2013; Pepinsky, 2019). Our study fills an important gap in the literature by exploring how the implementation of policies that are effectively authoritarian – and by extension, enable the process of democratic

⁴Using the difference-in-differences estimator; we cannot use regression discontinuity for the non-competitive races.

backsliding – ultimately depends on pre-existing political structures and networks. In short, populist leaders need to secure the cooperation of local political elites to successfully implement their agenda, but often must rely on those that are outside of the previous political establishment to do so.

The results dovetail with experiences from around the world, including in democracies at varying stages of development. In contemporary cases as diverse as the United States, Brazil, Hungary, India, and Indonesia, populist leaders have won elections and then faced serious challenges implementing signature policies within their entrenched political systems. The Philippines is a case with an especially weak party system, but even in countries with more stable ideological cleavages, national level outsiders need to realign the structures of politics to have a sustained influence. In contexts where power is decentralized and bureaucratic structures are less well developed, local politicians are afforded tremendous control over how policies dictated by the political center are translated into action (Grindle, 2017). In more developed bureaucratic institutions, allies at various levels of government are crucial to successful policy implementation (Scholz et al., 1991; Pressman and Wildavsky, 1984).⁵ Across these contexts, the political incentives for marginalized lower-level officials to independently drive forward signature policies in order to build connections with a populist leader are likely to be at play.

Last, our study addresses a complicated and often tragic thematic issue — policies around illegal drug enforcement — at a time when violent crackdowns are on the rise. From El Salvador (Holland, 2013) to Bangladesh (Quackenbush, 2018) and Cambodia (Prak Chan Thul, 2017), harsh government responses to drug trafficking and usage are often brutally popular among voters. Important work by Dell (2015) documents how crackdowns, driven by the partisanship of local officials, impact violence between competing cartels in Mexico. We build on this line of scholarship by showing that beyond ideological compartment or concerns for human rights or partisanship, local electoral incentives and a political “quid pro quo” play a critical role in dictating the extent of violent drug crackdowns (Jung and Cohen, forthcoming).

The paper proceeds with a section on theory and hypotheses before discussing the Philippine context and the regional debate about methamphetamine enforcement in Southeast Asia. We then explain our research design, including the identification strategy, data and estimation. We present the results before concluding. The Appendix includes numerous robustness tests and diagnostics, as well as narrative information regarding the case.

2 Theory

Political outsiders have enjoyed substantial success in recent years and have often won by championing policies that are popular with their base (and sometimes the public at large), but contravene long-held social or political norms (Mudde,

⁵The dynamics we describe may be less applicable to Parliamentary democracies, where the Head of State requires party support to come to power and then has the power to appoint allies at other levels of government.

2004; Spruyt et al., 2016). Examples include Donald Trump's 2016 campaign promise to "build a wall," Hungarian Prime Minister Victor Orban's crusade against the Central European University, and Rodrigo Duterte's ongoing "War on Drugs" in the Philippines. After being elected, a critical question is how these political outsiders who rely on *sui generis* signature policies and personal charisma can work within the existing system to implement their agenda.

In many areas of the developing world, including Latin America and Southeast Asia, "business-as-usual" politics involve a layered system of patronage, clientelism, and pork distribution in which national politicians need strong local allies to carry out their policy agendas and to shore up votes during elections (Wantchekon, 2003; Kitschelt et al., 2007; Stokes et al., 2013). Local politicians with ties to national figures, in turn, get preferential access to funds that allow them to win electoral support for themselves and, consequently, consolidate support for the national politicians to whom they have ties (Calvo and Murillo, 2013; Hicken, 2011). As a result, local politicians belonging to active patronage networks are likely to fight tooth and nail to maintain their dominance as "insiders," and undermine outsider national politicians (Fergusson et al., 2015).

A defining characteristic of outsider national politicians is that they do not enter office with a robust, preexisting apparatus of allies in other parts of government. For example, when Duterte entered office in 2016, only 19 out of 1,614 mayors nationwide shared his PDP-LABAN party label.⁶ Without local allies who share a vision, have a personal connection, or rely on maintaining ties with the national leader for career advancement, how do outsider leaders incentivize local elites to implement their preferred policies full-force? This question is particularly salient when the policy in question appears to violate constitutional and democratic norms. For local politicians, being connected to policies that are associated with democratic "backsliding" carries significant medium and long term risks.

We posit that outsider leaders without ties to existing party machines⁷ or a robust informal network of local allies⁸ can instead rely on local politicians who themselves do not have access to these same clientelist, establishment means of politics. Because local politicians without strong ties to established political networks cannot rely on the "pork" needed to either distribute clientelist benefits or implement programmatic policies that bolster legitimacy, they may instead choose to wholeheartedly carry out the policies favored by populist national figures. Throwing their support behind a populist's signature policy requires local political power but not necessarily great material resources. For example, implementing the drug war requires influence over local police but not substantial financing. Jumping aboard a national populist movement can allow politicians to tap into an alternative source of legitimacy and a new patronage network without requiring much in

⁶Shared party labels in the Philippines do not strongly signal ideological alignment; instead, they usually indicate politicians who are members of the same patronage network in a given election cycle.

⁷For example, the pre-2000 PRI in Mexico (Magaloni, 2006; Fergusson et al., 2015).

⁸Relevant in the Philippines (Hicken, 2014), Indonesia (Pepinsky, 2009), and India (Auerbach, 2016).

upfront monetary terms.

One might think that riding the populist wave would be the optimal strategy for *all* local politicians, especially during times when the policies espoused by the center are broadly popular. In the Philippines, Duterte's violent drug war has support from over 80% of the population according to most surveys (See Figure 1). While it may be good politics for local politicians to adopt some version of the policy, fully carrying out a policy of dubious legality carries significant risk. The public may express strong support for the "campaign against illegal drugs," but many civilians express significant fear of being victimized by its more violent manifestations. Support for extrajudicial killings, for example, hovers below 50%, suggesting the complexity for local politicians who want or need the support of a populist leader.

Adding to the public-facing costs local politicians may suffer, implementing populist policies espoused by anti-establishment politicians may lead to estrangement from the stable political parties or powerful political brokers that enable sustained political careers. This is especially salient in countries like the Philippines, where a small subset of political elites control politics for several generations (McCoy, 2009; Querubin, 2016; Cruz et al., 2017). Fully implementing policy initiatives that involve illegal practices or human rights violations can also leave local elites vulnerable to future prosecution if the political winds change. In short, instead of wholeheartedly implementing the signature policy, local politicians may choose to hedge, only implementing it to the extent that it does alienate the public or step on the toes of other important political players.

For which local elites, then, will it be worth the risk to fully implement the policies espoused by a populist national leader? We argue that the benefits are most likely to outweigh the risks for local politicians who have weak existing ties to establishment political networks. Especially in political systems that are reliant on long-established clientelist networks linking local politicians to national-level patrons, the local politicians who are not part of these networks are at a distinct disadvantage when it comes to winning re-election. Winning the support of the local population, either through patronage or programmatic politics, requires access to funds that stream down from the central government. However, legislators who control budgeting usually redirect funds to their local political allies who can help them campaign during the next election. As a result, local politicians who are "locked out" of establishment political networks may choose to implement populist policies more aggressively in order to gain attention and ride the leader's popularity to re-election.

The norm-defying nature of the signature policy is a crucial distinguishing factor between the dynamic we describe and "clientelist politics as usual." The risks associated with implementing a norm-defying signature policy allow the outsider national politician to screen for local allies who are willing to pay the costs associated with enthusiastic implementation and are likely to be committed supporters of a new policy agenda and political machine. In this way, a national-level populist leader pushing a controversial signature policy provides a credible roadmap for local politicians to advance their political careers if they do not have access to the traditional means of mobilizing votes. In the absence of the costs associated with

a norm-defying policy, a wide range of local politicians would likely bandwagon behind the national leader and local politics would quickly return to business as usual. Paradoxically, this affords populists the ability to use their outsider credentials and norm-defying character to succeed in implementing policies that would not otherwise gain traction had they been part of the establishment.

There are two important scope conditions for where these dynamics are expected to take hold. Outsider politicians that are already winning by large margins are unlikely to resort to national populist policies. Instead, it is those candidates that win by relatively bare margins, who, concerned about their chances of re-election, will turn to the populist policy to overcome their limited connections to the established patronage network. Furthermore, we expect these dynamics are most likely to be observed in contexts where local politicians have significant leeway over policy implementation. Contexts where local politicians have little control over the bureaucracy or where central government agencies rather than local ones carry out implementation, may experience different dynamics.

Stemming from this theory, our core hypothesis is that:

H1: Local politicians who are not aligned with establishment political networks are more likely to aggressively implement policies supported by national-level populist politicians.

The key logic behind this hypothesis is that local outsiders do not have the same level of access to the “traditional” means of maintaining political power. To test this key mechanism (and to establish the validity of the way we operationalize “insiders” and “outsiders”) we put forth a second hypothesis:

H2: Local politicians who are aligned with establishment political networks are more likely to receive “pork.”

Finally, observing the effort by certain local politicians to implement the signature policy, we would expect the outsider leader to reward these politicians with attention come election time. This could occur by sending prominent personalities within the party to campaign for these mayors, making campaign contributions, or allowing popular political branding to take place. While we expect the usual “turncoatism” that occurs in the Philippines of many local politicians switching to the national leader’s political party, we also expect that in the case of a populist leader with a norm defying signature policy, the former outsiders who credibly signaled alignment through aggressive implementation of the policy will actually reap political benefits, realigning the locus of local political power. Thus, in addition to the main hypotheses above, we also hypothesize the following:

H3: Provided the outsider national leader stays in power, local politicians - insiders and outsiders alike - will attempt to switch allegiances and align with the outsider leader.

H4: Local political outsiders who demonstrate loyalty to the outsider leader via the aggressive implementation of

the leader's policy will be more likely to be rewarded electorally for switching.

3 Context

3.1 The War on Drugs in the Philippines

*“Three-year-old Myka Ulpina died after being caught in a crossfire during an anti-narcotics operation in Rodriguez, Rizal last June 30. Ulpina's father, Renato, and another companion, as well as Senior Master Sgt. Conrad Cabilgao, who went undercover, also died in the shootout. The police said Renato fired at the police and used his daughter as shield. It's not a perfect world and “s**t happens”, Senator Ronald “Bato” Dela Rosa said Thursday as he defended the police.” **ABS-CBN News, 4 July 2019***

We test our theory in the Philippines, where President Rodrigo Duterte has executed a violent, controversial and politically supercharged “War on Drugs” in the aftermath of his election in 2016. Beyond norm-defying and constitutionally questionable, this policy has taken a tremendous toll in terms of lives lost. Numerical aggregates will never do justice to the stories of individual victims but, precisely because this policy has been so brutal, we think it is important to understand the reasons why it was so aggressively implemented across a country that was previously considered one of the strongest democracies in the region.

Illegal drug use is a highly salient and politically charged topic across Southeast Asia, as it is in many parts of the world. From 2013 to 2018, methamphetamine seizures across Southeast Asia tripled from about 40 million tons to just under 120 million tons (United Nations Office on Drugs and Crime, 2019). Among the ten ASEAN member states, all but Vietnam currently report that methamphetamine is the “primary drug of concern” in their society (United Nations Office on Drugs and Crime, 2019). In the Philippines, more than 90 percent of individuals admitted for drug treatment over the past five years used crystalline methamphetamine, a.k.a. crystal meth (United Nations Office on Drugs and Crime, 2019). This led to extensive public outcry and turned drugs into a powerful political tool for enterprising politicians like now President Duterte. Known as “the Punisher” during his time as mayor of Davao City in southern Mindanao, Duterte repeatedly won office by promising to deal with criminality and the drug economy in the harshest terms possible: “When I said I'll stop criminality, I'll stop criminality. If I have to kill you, I'll kill you. Personally.”⁹

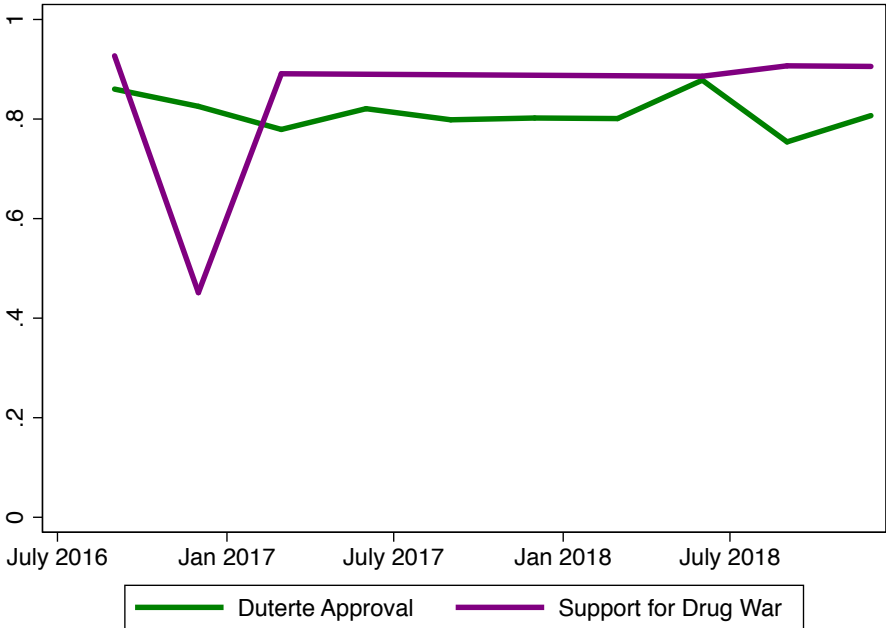
The Duterte administration's crackdown, though brutal and of questionable legality,¹⁰ continues to enjoy broad public support. Based on surveys conducted by Pulse Asia, Table A.25 shows that the drug war, including a 2017 escalation

⁹Ressa (2015).

¹⁰e.g. Human Rights Watch (2017)

known as “Double Barrel Reloaded,” is quite popular across economic classes. This popularity has been stable over time, as seen in Figure 1, with the only notable exception being a drop in late 2016, when a scandal about the Philippine National Police broke. The drug crackdown’s popularity returned after a matter of months, following a short “pause” demanded by the President. More than two thirds of respondents in the same surveys, however, say they fear being injured or killed inadvertently by drug war operations, a pattern driven primarily by lower class respondents.¹¹

Figure 1: Public Approval for the Drug War and President Duterte (Pulse Asia Opinion Polling)



Even if the Philippines case is the most extreme example, governments in Southeast Asia have often responded to drug problems with violent crackdowns against smugglers, distributors and even users. Replicating what became known in El Salvador in the 1990s as the ‘Mano Dura’ (iron fist) approach, police-led clearing operations are intended to beat back drug trafficking networks and give confidence to law-abiding citizens. Severe drug crimes are liable for capital punishment in most ASEAN countries – in recent years traffickers and distributors have been executed in Myanmar, Thailand, Malaysia, Singapore, Vietnam, Indonesia and the Philippines. Although primarily carried out through formal state processes, vigilantism and extrajudicial killings are on the rise across the region.

¹¹See Appendix Table A.25.

3.2 An outsider President

The Philippines has a presidential system. Presidents serve a six-year term with no reelection, while mayors and congressmen can serve up to two consecutive three-year terms. At the local level, there are 81 provinces in the country, each with, on average, 20 municipalities and cities (for a total of 1,634 municipalities and cities). Provinces are overseen by governors, and municipalities and cities by mayors.

Relative to the Manila establishment, Duterte came into power as a political outsider. While he was a longstanding mayor in Davao City, the Philippines' second largest population center, Duterte had relatively few ties to the traditional sources of national power. He is the first Philippine president from the large southern island of Mindanao, and declared that he was running on the last possible day for legal filing of a campaign. Duterte's ideology has been described as populist by a number of scholars and his policy platform centered on a campaign against illegal drugs that followed in the footsteps of the harsh crackdown he oversaw as Davao's mayor. Although Duterte won with a plurality of 39% of the vote – an outcome fairly typical for presidential elections in the Philippines – he is the only president since the 1986 “People Power” Revolution who won under a party label (PDP-LABAN) with virtually no representation in the legislature and no mayoral allies at the local level (see Table 1).¹²

Table 1: **Post-EDSA Revolution Presidents and Their Political Party**

	1992	1998	2004	2010	2016
President	Ramos	Estrada	Arroyo	Aquino	Duterte
President's party	LAKAS-NUCD	LAMMP	LAKAS-CMD/KAMPI	Liberal	PDP-LABAN
% of Lower House	20%	28%	44%	17%	1%
% of winning mayors	24%	26%	51%	14%	1%

In general, formal political parties in the Philippines are weak and campaigns are centered strongly around individual personalities (Hicken, 2009). The political party structure changes from election to election, and parties are not typically associated with a well-defined programmatic platform. Politicians have little allegiance to party labels, frequently switching from one party to another in search of the greatest access to patronage resources (Hutchcroft, 2008; Ravanilla, 2019).

Although parties are weak and politicians switch allegiances all the time, party labels are nonetheless useful for identifying “insiders” and “outsiders” during a given election cycle. In a patronage democracy like the Philippines, party labels capture extant patronage linkages among candidates across different levels of elective offices. To run under a national party label signals a candidate's allegiance with a dominant patronage network. This goes both directions: a party

¹²Although Duterte won with the smallest winning share of the vote since 1992 (when Fidel Ramos won with less than 24 percent of the vote), no presidential candidate has won more than 42.1% of the popular vote since the signing of the 1987 Constitution.

indicates to voters that the candidate has been accepted into the network and the candidate signals that they have chosen to join forces with others using that label, if only for a given cycle.¹³

These networks are centered around sources of both constitutional and *de facto* political power. In the Philippines, the wielders of power are, on the one hand, the national legislators with their “power of the purse” (e.g. control over budgeting and public works procurement) and, on the other hand, the president, with the concomitant powers of the executive (e.g. appointment of cabinet secretaries and key civil service positions, and control over the timing of the releases of internal revenue allotments to local government units). Such powers are crucial for the successful implementation of government programs and for mobilizing the clientelist campaign machine come election time. Consequently, “insiders” and “outsiders” are defined in terms of whether one is part of, or excluded from, the patronage networks that are able to secure the majority in the Batasan (House of Representatives), or the presidential office in the Malacañang Palace.

While there may be competing party labels (read: patronage networks) that vie for power before elections, once elections are over, national politicians nearly always coalesce around a single dominant party label commonly referred to as the “rainbow coalition” or “grand coalition,” by the subsequent midterm elections, if not before (see Table 2).¹⁴

Table 2: Party Labels and Dominant Patronage Networks

Election ¹	1992 P	1995 M	1998 P	2001 M	2004 P	2007 M	2010 P	2013 M	2016 P	2019 M
President	Ramos	Ramos	Estrada ²	Arroyo	Arroyo	Arroyo	Aquino	Aquino	Duterte	Duterte
President's party	NUCD	NUCD	LAMMP	KAM	KAM	KAM	LP	LP	PDP-LBN	PDP-LBN
Dominant party in Lower House	LDP	NUCD	NUCD	KAM	KAM	KAM	KAM	LP	LP	PDP-LBN

¹ Election is either Presidential (P) or Midterm (M). Diagonal lines represent realignment of the House to the President's party. Horizontal lines represent when the Party in the House initially remains in power during the next presidential cycle. ² Estrada stepped down in January 2001 and then Vice-President Arroyo was sworn in as the interim president. For brevity, we use the following shortened acronyms: NUCD is short for LAKAS-NUCD, KAM is short for LAKAS/KAMPI and PDP-LBN is short for PDP-LABAN

After the 2016 presidential election, former president “Noy” Aquino’s legacy patronage network under the Liberal Party (LP) label secured the legislature while Duterte secured the presidency. As previously explained, Duterte came into power without being connected to a dominant alliance. In part because of Duterte’s norm-defying, populist agenda, but

¹³Party labels also function to signal alignment between politicians on “sample ballots” passed out by brokers during vote-buying campaigns.

¹⁴The only midterm election when the majority of legislators did not switch allegiance to the LP president’s party was in 2001. This is because President Estrada resigned in January 2001 and was succeeded by Vice-President Gloria Arroyo in an interim capacity. As a result, the dominant party in the Lower House did not switch from Ramos’ party to Estrada’s, but instead jumped on Arroyo’s bandwagon.

also because of his popularity as an outsider, the usual agglomeration of patronage networks did not occur - at least not immediately. Even though a large number of LP legislators publicly pledged support for Duterte, their majority in the House allowed those who ran under the LP banner to have a great deal of sway over the distribution of national funds after the election. LP legislators had both the existing patronage network in place (with LP mayors winning a large share of local elections), as well as the seats in Congress needed to disproportionately distribute government funds to their local allies in an effort to maintain their base of ground-level support for the next election cycle. At the same time, it created incentives for non-LP politicians – the “outsiders” in search for a new patron – to seize the opportunity to signal to Duterte their readiness to either align with him should he create a new patronage network, or to ride on the popularity of his populist agenda in the case that no new president-led alliance was forthcoming.

By midterm elections in 2019, it became clear that Duterte and the popularity of his “War on Drugs” were not abating. Seizing the opportunity to switch allegiances, most politicians previously aligned with LP abandoned ship to align with Duterte and his party, PDP-LABAN. As a result, PDP-LABAN, which previously held 1% of the seats in the Lower House, occupied the majority of parliamentary seats leading into the 2019 midterm elections. By the end of the elections, LP, which previously held the majority, only occupied 6% of the seats in parliament.

3.3 Local politics and Mayors’ influence over policing

Collectively, mayors are perhaps the most important political power brokers in the country. Due to the high degree of political decentralization and the entrenchment of local political dynasties (Querubin, 2016), mayors exert a great deal of control over the implementation of many national government policies.

Local policing is a domain over which mayors have particularly strong implementation power. Most importantly, mayors have the power to select their municipal police chief from a list provided by the provincial police office, recommend the chief for promotion, or remove the chief at will (Sidel, 1999). At a broader level, guidelines from the Department of Interior and Local Government (DILG) afford mayors “operational supervision and control” over police and the ability to discipline officers in their municipality. Through these wide-ranging oversight powers, mayors essentially hold the reins of implementation of large-scale policing initiatives, including the drug war.¹⁵ In his inaugural State of the Nation address, Duterte specifically acknowledged that differing levels of mayoral commitment to the drug war were the most important factor driving its local implementation.¹⁶ Recognizing that local executives have tremendous power over his signature

¹⁵This sentiment was also expressed to the authors in interviews with several provincial and municipal police chiefs in the Bicol Region.

¹⁶<https://www.rappler.com/nation/140911-duterte-sona-2016-lgus-police-supervision>;

initiative, Duterte and his former police chief, Ronald “Bato” dela Rosa, have put extensive pressure on mayors to fully implement the campaign.

4 Research Design

The main empirical question for this study is: how does the insider/outsider status of a municipality’s mayor after the 2016 election impact the implementation of the Duterte drug crackdown and related local patronage politics? To answer this, we leverage two identification strategies, difference-in-differences (diff-in-diff) and regression discontinuity design (RDD), to examine mayoral elections between insider candidates (Liberal Party-affiliated) and outsider candidates (independent and minor party) that occurred simultaneously with the 2016 presidential election. We primarily examine close elections, for substantive and methodological reasons. Substantively, if outsiders win by a large margin they will feel comfortable pursuing reelection under their own steam and will focus on patronage politics that largely mimic insiders, rather than leaning into the drug war. Methodologically, a close election design allows us to leverage an RDD and makes it easier to make parallel trends assumptions for the diff-in-diff.

In 2016, the Philippines’ more than 1,600 cities and municipalities had mayoral elections, of which 189 (12%) had an insider and outsider as the top two finishers and a margin of victory of less than five percentage points.¹⁷ Figure 2 illustrates this universe of cases, which are distributed across all major island groups in the country.

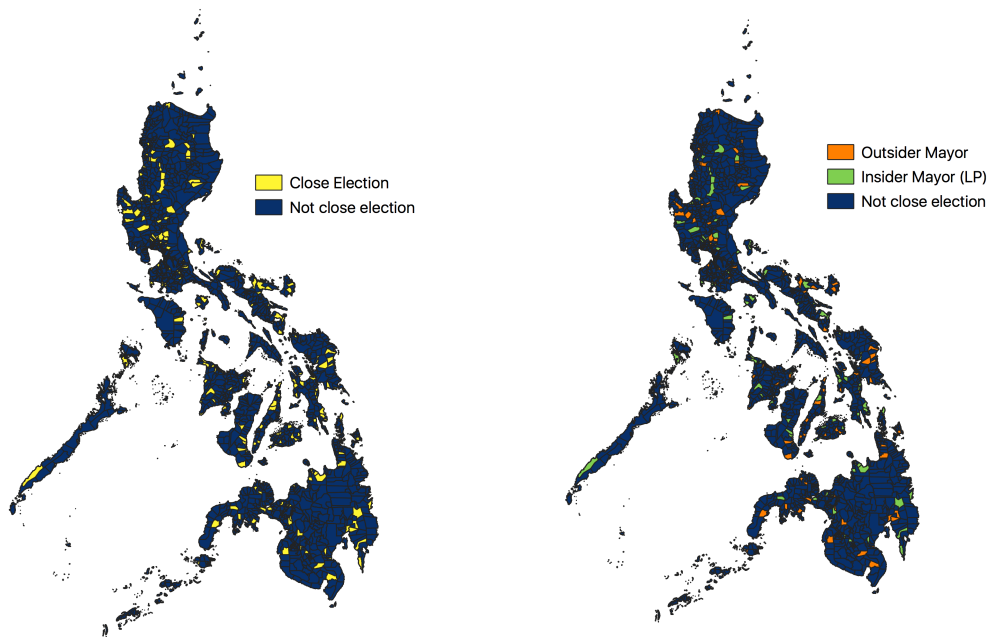
In these elections there is a sharp discontinuity: when a candidate wins a bare plurality of valid votes they are elected mayor; if they fall short by one vote they lose. Political scientists regularly use very close elections to measure the causal effects of candidate characteristics, such as ideological extremism (Hall, 2015) or gender (Brollo and Troiano, 2016). A common approach is the regression discontinuity design (RDD) that uses the margin of victory of candidates of a particular type as the running variable (Lee, 2001; Eggers et al., 2015). This approach requires that there be no “sorting” of candidates, smoothness at the boundary, and caution that the causal estimates are only valid as a local effect (Cattaneo et al., 2015; De la Cuesta and Imai, 2016).

A second approach to close election research design is to assume that uncertainty and random variation in voter behavior renders very close elections to be natural experiments with as-if random assignment (Lee, 2008; Lee and Lemieux, 2010). In such a case, pre-treatment outcomes and covariates (as well as trends in these variables) would be expected to

<https://www.rappler.com/nation/141011-sona-2016-duterte-marching-orders-police-drugs-crime-corruption>

¹⁷Margin of victory is defined as the absolute value of the vote percent margin between the Liberal Party and the top performing outsider candidate. We define outsider as any candidate that is not on the LP slate. The handful of cases where the Liberal Party did not have a finisher in the top two are excluded.

Figure 2: **Close mayoral elections, 2016 (within 5 percentage points)**



be balanced between the comparison groups (Caughey and Sekhon, 2011). With this assumption, standard difference-in-means, difference-in-differences, or other methods used to analyze experiments, would be appropriate.

We test the effect of insider versus outsider mayors winning competitive races on implementation of drug war policy after the 2016 election using both approaches, employing a non-parametric regression discontinuity design (Calonico et al., 2014) and a two-period difference in differences estimator (Bertrand et al., 2004). We find similar results with both estimators, giving greater confidence that the results we present reasonably reflect reality. To bolster the research design, we carry out a range of diagnostics and placebo tests, including two sorting tests (McCrary, 2008; Cattaneo et al., 2018), pre-treatment covariate and baseline outcome balance tests, a placebo test on non-competitive elections, and varying dates for the two-period cutoff. We also use varying bandwidths for the RDD and ‘competitive election’ dummy, present an ANCOVA analysis, and reshape the outcome variables in various ways (levels, per capita, log transformation).

For our main analysis we take advantage of pre-treatment outcome data to reduce the variance of our estimates. The divider for the two periods is July 1st 2016, when President Duterte and the newly elected mayors were sworn into office.¹⁸ For the RDD we utilize the pre-period outcome data by differencing the dependent variable, i.e. subtracting the pre-Duterte outcome from the post-Duterte outcome (Lee and Lemieux, 2010, 297). More details and justification are

¹⁸The lame duck period in the Philippines is seven weeks, spanning from May 9th to June 30th. In Appendix Table A.12 we show that the results are robust to including the lame duck in the post period.

presented below in the estimation subsection. The difference-in-differences (DID) approach incorporates baseline outcome data in the first period. In addition to reducing the variance through the use of pre-treatment outcomes, DID has the helpful benefit of relaxing the as-if-random assumption, requiring instead only parallel pre-trends for identification, in addition to positivity and SUTVA (Bertrand et al., 2004; McKenzie, 2012).

We consider several potential threats to inference given the research design, context, and topic of inquiry. For example, spatial spillovers of criminal behavior, police activity or political learning across municipalities would each cause SUTVA violations. We examine this possibility in detail in Appendix Section A.4 and find no evidence that spatial spillovers are driving or confounding the results. It turns out that very few of the municipalities in our close election sample neighbor one another, limiting the scope for such violations. Two other potential threats include politicians sorting across the discontinuity or measurement error (for example, misreporting by police or news sources) that is correlated with the winners of the close mayoral elections in 2016. In the Data section below, we discuss various potential data irregularities and argue that they are not likely to be associated with the intervention of interest for this study, and thus unlikely to discredit our estimates.

Lastly, we use the difference in differences approach to test whether there are differences between insiders and outsiders in non-competitive races. If we found similar effects in the non-competitive sample, this would cast doubt on our main hypothesis, as these candidates should not be incentivized to engage in the drug war in the same way that outsiders in close margin elections are.

4.1 Data

Bantay Krimen

One of two key dependent variables in our analysis is measured using the “Bantay Krimen” dataset of police blotter reports published online by the Philippine National Police (PNP). The data have been posted in real time based on blotter reports collected by municipal police stations and organized by provincial police offices. We scraped the data underlying the maps dating back to late 2015, six months prior to Duterte’s election. Recorded incidents are broken down into 7 main categories: 1) drug-related crimes, 2) theft, 3) assault, 4) homicide, 5) robbery, 6) rape, and 7) vehicular accidents. Over the time period of this study, 994,212 crimes were recorded in the dataset, including 120,768 drug-related incidents. We use the number of drug-related incidents as a measure of the degree to which local police offices implemented Duterte’s drug war. Reporting drug-related incidents follows set guidelines articulated in the Revised PNP Manual on Anti-Illegal Drugs Operations and Investigation (2014), all of which require active PNP operations.¹⁹

¹⁹To be classified as drug-related, the incident must fall into one of the following seven sub-categories: (1) buy-bust

In Figure 3, we analyze the nationwide trends in drug-related police blotter reports to ascertain if the data follow what we know to be the general contours of the War on Drugs. Immediately after the Duterte transition team began its work in June 2016 there was a large uptick in the number of drug-related blotter reports. In October 2016, a South Korean businessman named Jee Ick-joo was kidnapped and held for ransom, before being killed by what turned out to be PNP officers involved with the drug war. This led to an investigation and eventually the first “pause” in the drug war ordered by the President, which corresponds with a sharp drop-off in drug-related incidents in our data.²⁰ Several months later, Duterte restarted the drug war in earnest with *Operation Double Barrel Reloaded*, leading to the highest rate of PNP drug-related incidents during his tenure. In October 2017, Duterte instituted a second “pause” to the drug war, ordering the PNP to disband its anti-drug units and cease active operations after the killing of three teenagers led to extensive public outcry.²¹ Finally, Duterte ordered local PNP offices to reconfigure their anti-drug units and restart operations several months later. The fact that the ebb and flow of incidents in our data corresponds with these well-known patterns of the drug war gives us greater confidence that the data are reasonably capturing activities on the ground.

ACLED

One concern with using data from official police reports is that there may be an opportunity for municipal police offices to manipulate reported crime rates. While an increase in the rate of drug-related crimes may represent actual aggressive implementation of the drug war, it may also be indicative of police chiefs (or mayors) who falsely display more aggressive implementation.

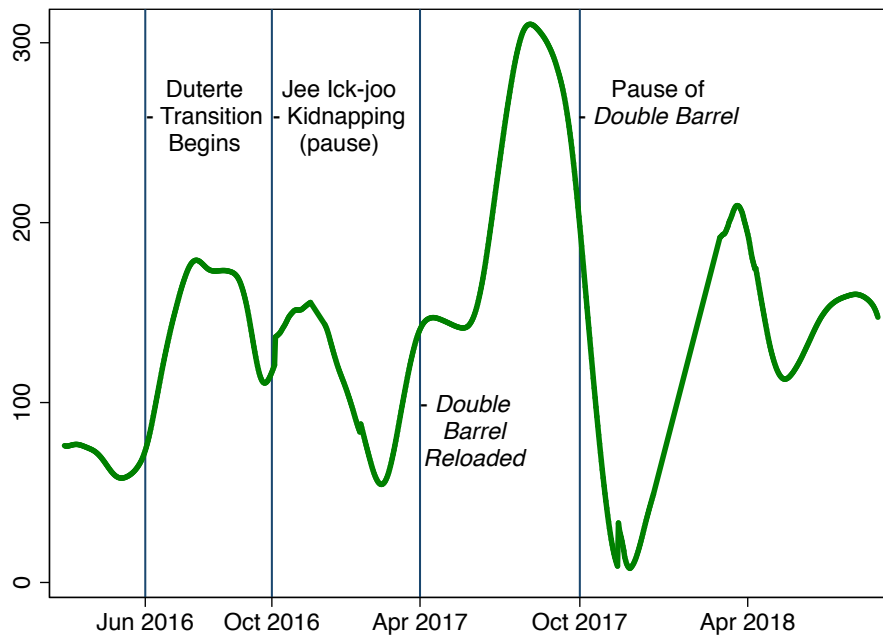
To mitigate this concern, we use a second source of outcome data — ACLED — to further validate the results. The Armed Conflict Location & Event Data Project (ACLED) is a news-based event aggregator that provides geo-referenced data on violent incidents around the globe.²² ACLED codes incidents’ timing, location, and content, and has tracked drug-related incidents in the Philippines since January 1, 2016, about four months before President Duterte won the 2016 election and six months before he took power. Using the GPS coordinates from the dataset, we are able to compute, by municipality, whether a drug killing took place, as well as the estimated number of fatalities. Overall, we find that the operations, (2) search and seizure by virtue of a warrant, (3) marijuana eradication, (4) financial investigation, (5) controlled delivery, (6) clandestine laboratory, and (7) *in flagrante delicto* (i.e. unplanned operations). Voluntarily surrender by drug suspects is not included in these incidents and is recorded separately by the PNP and the Philippine Drug Enforcement Agency (PDEA).

²⁰A brief decline in public opinion associated with this event can be seen in Figure A.25.

²¹<https://www.usatoday.com/story/news/world/2017/10/13/philippine-president-rodrigo-duterte-pulls-out-760799001/>

²²<https://www.acleddata.com/>

Figure 3: Drug-related Police Blotter Reports (Nationwide)



contours of the drug war captured by ACLED closely align with the Bantay Krimen data.

The ACLED dataset on the Philippines drug war includes two primary types of incidents: (1) the “killing of drug suspects by either government security forces (police/military) or by ‘vigilantes’,” and (2) “inter-gang violence.” The vast majority of the incidents reported (>90%) are police or vigilante killings.²³ In all, the ACLED dataset recorded 4,297 incidents over the period of this study, the vast majority of which involved verified fatalities.²⁴ The nature of these incidents means that they are virtually impossible for the police to fake.

Importantly, the ACLED dataset distinguishes between drug war killings by police and those by vigilantes, which helps us to test our hypothesis that police are being encouraged by mayors to increase effort. This also helps us to address a second alternative explanation, which is that outsider mayors are simply less capable of *restraining* the police from harsh implementation of the drug war. If this were the case, we would also expect outsider mayors to be less capable of restricting the activities of vigilantes wishing to dole out extrajudicial justice.

Our view is that ACLED’s count of fatal drug killings is almost certainly an under count, but it covers an important

²³https://www.acleddata.com/wp-content/uploads/dlm_uploads/2018/08/Coding-of-Drug-Violence-in-the-Philippines_Final-1.pdf

²⁴Tracking the most severe instances of violence related to drug cases is in keeping with ACLED’s mission of measuring armed violence.

subset of incidents in a way that is unrelated to the insider or outsider status of the mayor at the time. We also hedge our bets by using, as our primarily ACLED outcome, a binary measure of whether there were *any* fatal incidents reported in a municipality during the period in question, rather than a count of all incidents (we include counts of fatalities in the Appendix). This separates the municipalities more sharply than comparing the number of incidents in the dataset.²⁵

Public Works Procurement Data

An important mechanism of our theory is that outsider mayors' lack access to the traditional resources used to mobilize electoral support (Hypothesis 2). To observe whether patterns of patronage distribution align with our hypothesis, we use newly available, granular data on civil works contracts from the online civil works monitoring system of the Department of Public Works and Highways (DPWH). These data detail where the contract was implemented, which firm won the contract, the date the contract was awarded, value of the contract, type of public works, and whether the spending was for repairs of existing infrastructure or for new construction. The dataset spans from 2003 to the present.

We analyze four important kinds of infrastructure projects – roads, flood abatement, schools and health facilities – in addition to the combined DPWH budget that a municipality receives. Together those projects make up 95% of infrastructure spending at the municipal level. We separate procurement spending into two main types, corresponding to the ease with which local politicians can skim the budget. Roads and flood abatement projects are well known to be 'high corruption' budget categories whereas it is far more difficult to extract money from the construction of schools and health facilities.²⁶ We expect the results to show that being an insider garners much greater access to funds in 'high corruption' procurement categories. In Appendix sections A.7 and A.8 we include a stylized narrative of the procurement, distribution and skimming process, and explain the data quality checks that we carried out (including random spot checks of more than two hundred bids).

2010 Census

As previously explained, the plausibility of our research design is reliant on the municipalities where outsider mayors barely won or lost being similar across covariates that might drive differential implementation of the drug war. To investigate this assumption, we look for covariate balance on measures captured in the "2010 Census of Population and Housing" conducted by the Philippine Statistical Authority (PSA). The survey collects information at the household level for more than 92 million Filipinos. We obtained this data at a municipal level from the PSA, allowing us to compare, within our sample of close mayoral elections, the municipalities that narrowly elected a Liberal Party (LP) mayor and those that elected a minor party/independent (non-establishment) mayor. Appendix Table A.26 shows the summary statistics for 187

²⁵Additional discussion of the ACLED dataset is in Appendix section A.8

²⁶<https://newsinfo.inquirer.net/1070015/house-probe-dpwh-flood-control-scam>

of the 189 municipalities within our sample.²⁷ Importantly, we find that there are no differences between municipalities with LP or outsider mayors elected in 2016 in terms of their background characteristics.

The Philippines Statistical Authority (PSA) is considered a professional, non-partisan agency that carries out census data collection based on techniques inherited from the U.S. Census Bureau, which helped found its predecessor. The U.S. government carried out the censuses of 1903, 1918 and 1939, before turning things over to the Bureau of the Census and Statistics (BCS) of the newly independent Philippine government. Based on the authors' interactions with the PSA we have no reason to believe that the 2010 Census figures would be affected by expectations of who would win narrow 2016 mayoral elections, in which case measurement error would not confound our results.

2016 Election Data

To measure our key independent variable, *outsider* status (i.e. lack of mayoral alignment with establishment politics), we use precinct-level data (aggregated to the municipal level) from the 2016 Philippine elections. Voter turnout in the election was around 82%. We create two main categories of mayors based on their political party. First, we designate all mayors who ran under the LP party label as being aligned with establishment elements of Filipino politics. Approximately 50% of all congressmen and 46% of mayoral winners ran under the LP label. Duterte ran under PDP-Laban, a party label revived from the late 1980s.

It is clear in Table 3 that, unlike in previous elections, the overwhelming majority of these outsider mayors are from neither the winning president's party (PDP-LABAN) nor from another dominant opposition party. Rather, they ran as independents or were associated with one of numerous smaller party labels.

Our theory relies on the assumption that insiders have disproportionate access to patronage that can be used to mobilize electoral support. As mentioned in the context section, politicians who ran under the LP label in the House of Representatives had disproportionate control over the allocation of federal funds in the aftermath of the 2016 elections. If LP mayors were left out to dry by their national-level patrons who publicly jumped ship to support Duterte or, alternatively, if non-LP politicians were just as likely to control important patronage distribution networks, we would not expect to find differences in public works allocations to LP and non-LP mayors. Finally, if our definition miscoded mayors who are part of prominent, non-LP patronage networks as "outsiders," this would bias against us finding an effect. To further test this, we carry out a robustness check that iteratively drops each smaller party and independents, finding that the results remain (see Appendix Tables A.13 and A.14).

Among the approximately 1600 mayoral elections, we designate those decided by less than a 5% vote margin as "competitive" for the purposes of the difference-in-differences analysis. 189 elections fall into this category. Among those,

²⁷Boundary changes between 2010 and 2016 impacted the matching for two municipalities

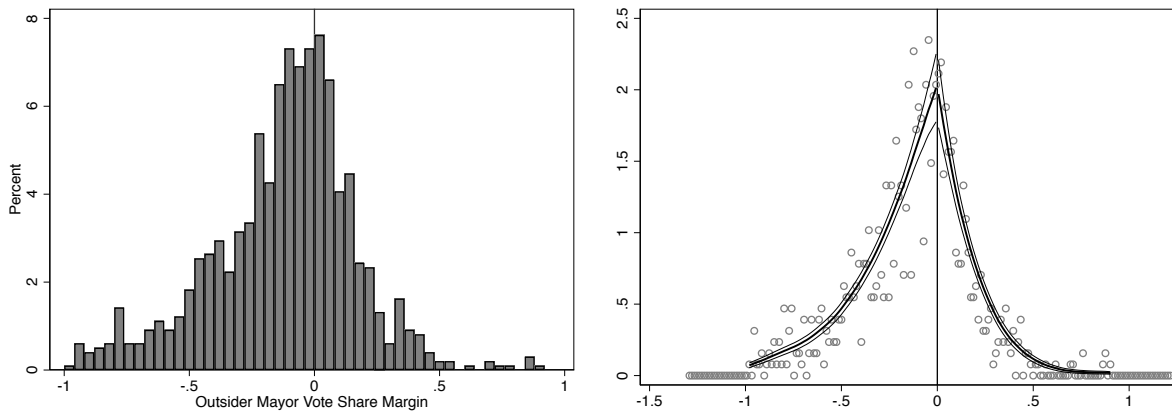
Table 3: **Distribution of Winning Mayors by Party Label**

Party	Frequency	Share
LP	747	0.46
PDP-LABAN	19	0.01
1CEBU	8	0
AI	8	0
AKSYON	13	0.01
BAKUD	8	0
BISKEG	2	0
BPP	18	0.01
HUGPNG	3	0
INDEPENDENT	106	0.07
KB	4	0
KBL	9	0.01
KDO	1	0
KMBLN	8	0
KSN	1	0
LAKAS	8	0
LDP	5	0
NP	143	0.09
NPC	199	0.12
NUP	119	0.07
NAVOTENO	1	0
PADAYN	7	0
PAK	1	0
PCM	6	0
PDPL	1	0
PELA	1	0
PMP	5	0
PPP	9	0.01
PROMDI	1	0
PRP	2	0
PTM	6	0
SIGAW	2	0
SZP	9	0.01
UNA	134	0.08
Total	1614	1

Notes: The Liberal Party (LP) has the majority of seats in the Lower House. PDP-LABAN is President Duterte's party.

slightly more than half were won by LP candidates and slightly less than half were won by outsider candidates. Figure 4 displays the density of mayoral races by the vote share margin for the outsider candidate. We see that there appears to be no heaping along the discontinuity; that is, neither LP nor outsiders are able to “sort” into winning (McCrary, 2008; Barreca et al., 2016). We also fail to reject the null of no manipulation using Cattaneo et al.’s 2018 test.

Figure 4: Tests of Politician Sorting



Notes: Panel 1 is a histogram of the outsider vote share margins, panel 2 the McCrary (2008) sorting test, using McCrary’s Stata package.

4.2 Estimation

To implement the two-period difference-in-differences estimator, we collapse the crime blotter reports and other time series data into ‘pre’ and ‘post’ periods, divided by President Duterte’s first day in office: July 1, 2016.²⁸ Then, using OLS, we estimate:

$$Y_{it} = \beta_0 + \beta_1 M_i + \beta_2 P_t + \beta_3 M_i * P_t + \epsilon_{it}$$

where Y is the outcome of interest, say drug-related blotter reports per capita or an indicator of a drug-related killing, in municipality i in period t . M is an indicator for ‘outsider’ mayors, set to one when the mayor elected in 2016 is not from the Liberal Party. P is an indicator for the post-Duterte period, which becomes 1 after July 1, 2016, 0 before. β_1 and β_2 are equivalent to municipality and period fixed effects, and ϵ is the error term. Municipality fixed effects are absorbed through demeaning and standard errors are clustered by municipality.

²⁸We show in the Appendix that the results are robust to using the first day of the Duterte transition (June 1, 2016) or May 9th, when his opponent conceded, as an alternative binning dates.

For the regression discontinuity estimates, we take a first difference of the outcomes from the two period panel to create a single period ‘differenced’ dependent variable. This allows us to maintain the variance reduction advantages of the panel data while using an RDD, as per Lee and Lemieux (2010). Differenced RDD approaches are increasingly common, including studies on fiscal rules in Italy (Grembi et al., 2016) and infrastructure investments in India (Shenoy, 2018). The interpretation of the parameter does not change with the inclusion of the differenced outcome variable; as put by Lee and Lemieux (2010, 297) “performing an RD analysis on Y minus its lagged value should also yield the treatment effect of interest. The hope, however, is that the differenced outcome measure will... lower the variance in the RD estimator.”

We follow Calonico et al. (2014) in employing a bias-corrected local linear polynomial within the CCT optimal bandwidth.²⁹ We implement it using the `rdrobust` package in Stata (Calonico et al., 2017).³⁰

5 Results

In this section we present the primary results of our study and an analysis of the political mechanisms driving the effects we find, followed by several placebo tests. We follow this with a discussion of potential alternative explanations for our findings, ruling them out in favor of our preferred interpretation. In the Appendix we report a range of additional results, including alternative empirical specifications, additional outcome variables, tests of spatial spillovers, diagnostics, and narrative information about our data and the case.

We begin by illustrating the broad patterns in the data, before carrying out our regression analyses. In the lefthand panel of Figure 5, we observe that following Duterte’s accession to the presidency, there is no divergence in police blotter reports of total crime between narrowly winning insider mayors from the Liberal Party and outsider mayors. Overall crime rates were stable through Duterte’s first year and a half in office, with the exception of a slight increase during Operation *Double Barrel Reloaded* in mid 2017.

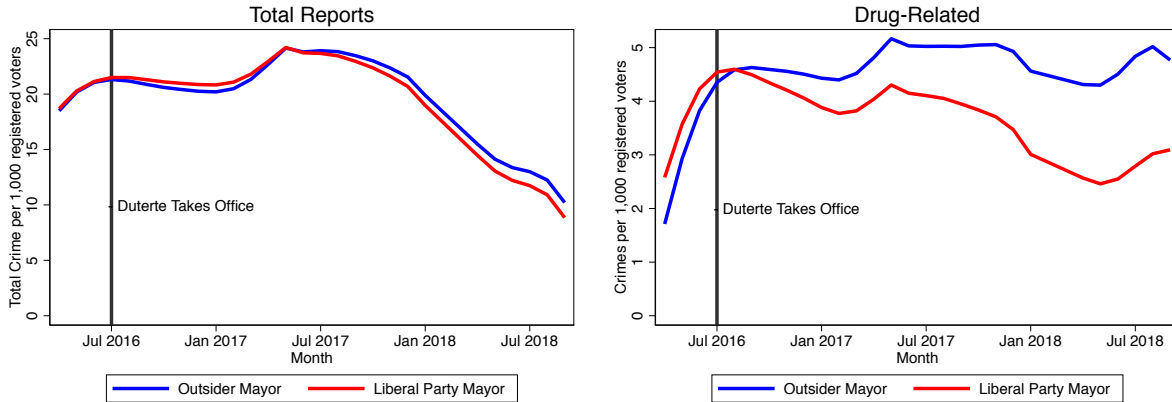
In contrast, the second panel of Figure 5 shows an immediate and widening gap in drug-related blotter reports between outsider and Liberal Party mayors following Duterte’s election. Although both types of municipalities experience an uptick during *Double Barrel Reloaded*, drug-related crime reports are consistently higher post-election in municipalities where outsider mayors narrowly defeated the LP candidate.

Our regression estimates confirm a large and significant difference between outsider and LP-led municipalities in

²⁹See also Calonico et al. (2018)

³⁰For robustness we show a range of alternative RDD choices, including bandwidths and bias-correction, in Appendix A.1.11.

Figure 5: Police Blotter Reports



Notes: Patterns displayed are from the 189 municipalities with competitive mayoral elections in 2016 (<5% margin of victory). All crime excludes “pure” auto accidents (those that are not classified as homicide or other crime, e.g. hit and run). Drug-related incidents are defined as blotter reports where primary designation is RA-9165, referring to the “Comprehensive Dangerous Drugs Act of 2002.”

their reporting of drug-related crime. Columns (1) and (5) in Table 4 show that in municipalities with an outsider mayor, there are about 40% more drug-related crimes reported during the post-period than those with insider mayoralties. The effect size ranges from 0.36 to 0.46 per 1,000 adults, depending on whether one uses the difference-in-differences estimator or the regression discontinuity.³¹ At the same time, we do not observe any significant differences between insider and outsider mayors for any other kinds of crime recorded in police blotter reports, as seen in columns (2)-(4) and (6)-(8).³² This includes theft, assault, homicide, robbery, rape, car accidents, car theft or total crime. We also find no differences between insiders and outsiders in municipalities that did not have close elections (greater than 5 percentage point margins of victory).³³

Figure A.2 illustrates the RDD effects graphically, showing the significant jump at the boundary. This chart also indicates how the differences between outsiders and insiders appear to decay as the margin of victory gets larger. The null effect for non-competitive races, further developed in Appendix Table A.9, demonstrates our proposed scope condition, where outsiders in close races are expected to respond to the drug war but those outside would not.

³¹In the Appendix we show that these results hold for a range of alternative specifications, including diff-in-diff with a two percent margin, ANCOVA with pre-treatment covariates, and different RDD packages.

³²Appendix Section A.1.1 shows the effects for each crime category separately, using both difference-in-differences and the RDD, finding nulls for all but drug-related crime.

³³See details in Table A.9 in the Appendix.

Table 4: **Effect on Post-Duterte Crime Rates (Police Reports)**

<i>Dependent variable:</i>	(1) Drugs	(2) Assault	(3) Theft	(4) Total	(5) Drugs	(6) Assault	(7) Theft	(8) Total
Diff-in-Diff Estimate	.36* (.18)	-.13 (.24)	-.04 (.13)	.05 (.43)				
RDD Estimate					.46* (.21)	-.14 (.28)	-.07 (.16)	-.01 (.49)
LP Post-Duterte Mean	.95	1.57	.94	3.98	.72	1.21	.79	3.04
N	378	378	378	378	494	589	555	626
Clusters	189	189	189	189				
Optimal Bandwidth					.158	.213	.194	.234

Notes: Columns (1)-(4) report the difference-in-differences interaction term (β_3) and include municipality and period fixed effects, SE clustered by municipality. * = $p < .05$; Sample: municipalities with very close (<5%) margin of victory. Columns (5)-(8): bias-corrected local linear polynomial RDD with CCT bandwidth; outcomes differenced (pre-Duterte subtracted from post-Duterte); running variable is outsider vote share margin.

Proceeding to the results based on ACLED's coding of news events, we find similar evidence. As per the difference-in-differences estimate in column (2) of Table 5, the probability of a fatal drug war incident where police kill a drug suspect is 16 percentage points higher in outsider municipalities, a more than sixty percent increase.³⁴ We find, however, no difference in the probability of a vigilante-instigated fatal incident in the municipality (see column 3). In all cases, the RDD estimates (displayed in Figure 6) are highly consistent with the diff-in-diff results.

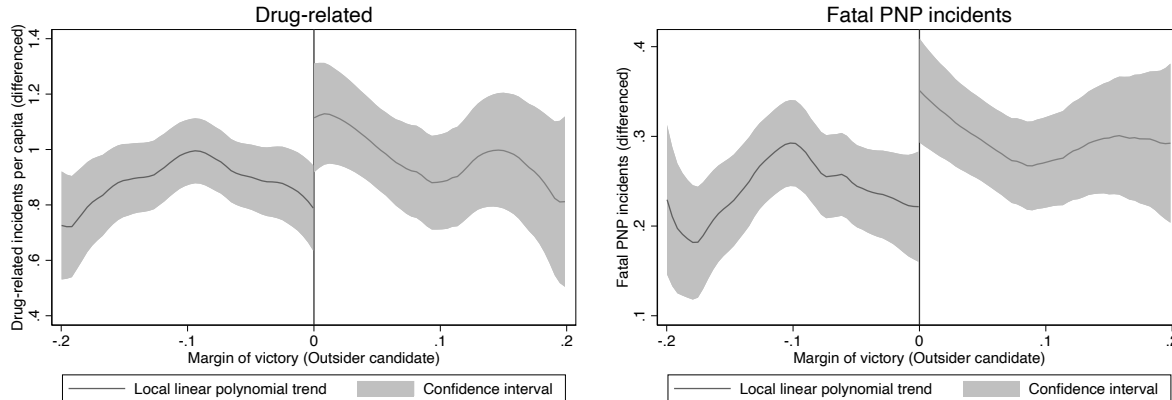
Table 5: **Effect on Fatal Drug War Incidents (ACLED)**

<i>Dependent variable:</i>	(1) Any Fatal Incident	(2) PNP Fatal	(3) Vigilante Fatal	(4) Any Fatal Incident	(5) PNP Fatal	(6) Vigilante Fatal
Diff-in-Diff Estimate	.14* (.07)	.16* (.07)	-.02 (.06)			
RDD Estimate				.21* (.09)	.23** (.08)	-.03 (.07)
LP Post-Duterte Mean	0.30	0.25	0.19	0.24	0.20	0.21
N	378	378	378	984	984	984
Clusters	189	189	189			
Optimal Bandwidth				.133	.132	.197

Notes: Columns (1)-(3) report difference-in-differences interaction term (β_3), includes municipality and period fixed effects, SE clustered by municipality. * = $p < .05$; Sample: municipalities with very close (<5%) margin of victory. Columns (4)-(6): bias-corrected local linear polynomial RDD with CCT bandwidth; outcomes differenced (pre-Duterte subtracted from post-Duterte); running variable is outsider vote share margin.

³⁴The estimate for the RDD is even larger: 20 percentage points.

Figure 6: RDD plots for Police Blotter Reports and ACLED PNP Fatal incidents



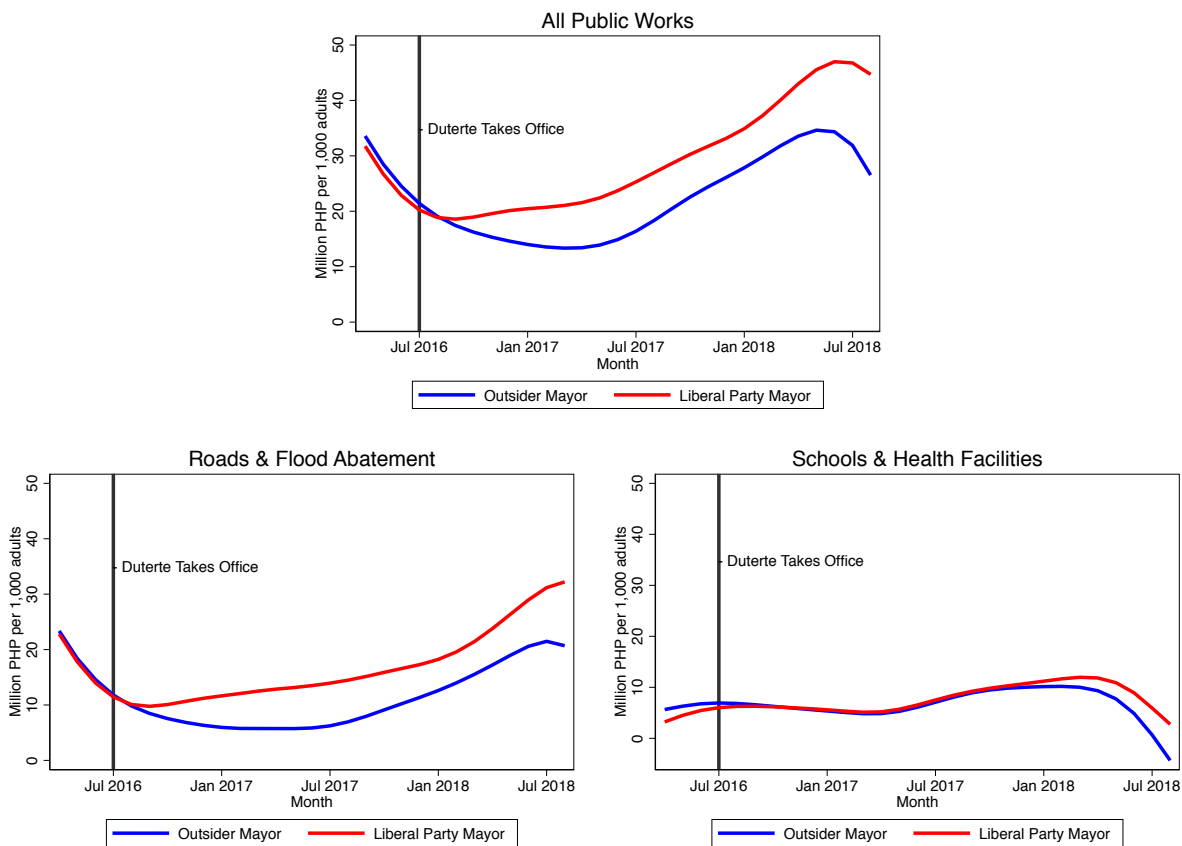
Notes: Using CCT bandwidth, local linear polynomial regression and biased-adjusted CCT confidence intervals. Drug-related incidents are defined as blotter reports where primary designation is RA-9165, referring to the “Comprehensive Dangerous Drugs Act of 2002.” Fatal PNP incidents are those where PNP officers killed a drug suspect.

5.1 Political Drivers of the Drug War

What explains why outsider mayors prosecute the drug war more aggressively than establishment mayors? We hypothesized that outsider mayors will allocate further effort to the drug war to substitute for an inability to generate pork for their municipalities through public procurement, a critical part of patronage politics in the Philippines (Ravanilla, 2017; Bohlken, 2018). Because they are outside the establishment political network they are both less likely to be connected to national-level politicians and less likely to be well-versed in securing funds from the center. Indeed, as shown in Figure 7, we find that in the post-Duterte period (2016-2018), outsider mayors were on average much less able to secure public procurement for their municipalities than Liberal Party mayors. Specifically, these outsiders attracted only about half as much spending per capita on roads and flood abatement projects, two categories of projects that are notorious for the scale of their kickbacks and patronage (Ramos, 2019; Ravanilla, 2019). For health and educational construction projects that figure less prominently in politicians’ skimming strategies (though they are not immune to corruption), we see no difference between insider and outsider mayors.

Table 6 shows the effects in greater detail. On average, insider (Liberal Party) mayors were able to secure about 7.7 million Philippine pesos (about 150,000 US Dollars) per 1,000 population in public works spending during the post-Duterte period, 40 percent higher than the 5.5 million that municipalities with outsider mayors attracted. As seen in columns (2) and (5) of Table 6, these differences come almost entirely from the ‘easy corruption’ categories of roads and flood abatement. In contrast, we see no difference in procurement levels for schools and health facilities which, although helpful public goods, are very difficult to steer toward the type of kickbacks and clientelistic spending that characterize local politics in the

Figure 7: Public Works Procurement Amounts per month



Notes: Among 189 municipalities with very close (<5% margin of victory) for the 2016 mayoral election. Procurement for public works includes roads, schools, health facilities, repairs.

5.2 Electoral Consequences

Procurement corruption matters for local mayors in large part because these skimmed funds are used for mobilizing the clientelist campaign machine: vote buying, paying political brokers and village chiefs, electioneering expenses, etc. (Canare et al., 2018; Mendoza et al., 2016).³⁶ In previous election cycles, insider mayors with access to funds that greased the patronage machine were far more likely to maintain their hold on local political power. During the 2013-2016 mayoral

³⁵See RDD plots for these outcomes in Appendix Figure A.2.

³⁶These projects could presumably also be used by mayors for credit claiming — see e.g. Cruz and Schneider (2017) — however, if this were the case we would expect insiders to have greater funding for schools and education, rather than only roads and flood abatement.

Table 6: **Effect on Public Works Procurement**

<i>Dependent variable:</i>	(1)	(2)	(3)	(4)	(5)	(6)
	Total Procurement	Corruption: <i>Easy</i>	<i>Difficult</i>	Total Procurement	Corruption: <i>Easy</i>	<i>Difficult</i>
Diff-in-Diff Estimate	-2.22*	-1.98**	-.13			
	(.90)	(.66)	(.40)			
RDD Estimate				-3.62**	-3.03**	-.61
				(1.16)	(.93)	(.46)
LP Post-Duterte Mean	7.7	4.3	2.3			
N	378	378	378	450	426	491
Clusters	189	189	189			
Optimal Bandwidth				.143	.132	.156

Notes: Outcomes are in millions of Philippine Pesos (about 50 Pesos per USD) per 1,000 population. Columns (1)-(3) report difference-in-differences interaction term (β_3), includes municipality and period fixed effects, SE clustered by municipality. * = $p < .05$; Sample: municipalities with very close (<5%) margin of victory. Columns (4)-(6): bias-corrected local linear polynomial RDD with CCT bandwidth; outcomes differenced (pre-Duterte subtracted from post-Duterte); running variable is outsider vote share margin. Easy corruption = roads and flood abatement; difficult corruption = schools and health facilities.

cycle (the one just before our study's sample), we find that insider incumbents were about 17 percentage points more likely to be re-elected than outsider mayors.³⁷

In May 2019, the Philippines midterm election took place, pitting nearly all the incumbent mayors within our narrow sample against challengers. Election law restricts a mayor to three consecutive terms, so some mayors were obliged to step aside, in nearly all cases running for a different local or national office. Using the same regression discontinuity framework, the following table compares 2019 election outcomes for municipalities with an insider mayor versus an outsider mayor.³⁸

We focus in particular on incumbent performance and the extent to which incumbent mayors switch parties, especially to President Duterte's PDP-Laban party. In Table 7 we see in column (1) that outsider mayors (defined as such during the 2016 election) performed about 5 percentage points better than former insiders. The typical incumbent in 2019 earned about 58% of the vote, so this represents about a 9% reduction.

Nearly 80 percent of mayors switched parties from 2016 to 2019, reflecting the realignment that almost always

³⁷This utilizes a 5% close electoral margin in 2013, with the same LP/Non-LP breakdown. See details in Appendix Section A.1.14.

³⁸Because comparable electoral outcomes are only available for 2019, with the exception of incumbent vote share, we cannot use the difference-in-differences setup for this section of the results. We difference the incumbent vote share in the same way as previous outcomes.

takes place during midterm elections.³⁹ Table 7 column (2) shows that insiders were 11 percentage points more likely than outsiders to change party (at the discontinuity), recognizing that their former Liberal Party credentials were no longer as valuable as in the past. Across the entire country, 95% of LP mayors switched parties, while 76% of outsider mayors made a switch, though column (3) suggests both types of mayors switched to Duterte’s PDP-Laban at similar rates. Our theory predicts that this type of party switching, typical of Filipino elections, will be viewed as ‘cheap-talk’ by the Duterte regime in the absence of more aggressive implementation of his policy agenda. Indeed, even though the rates of party-switching were similar, in column (4) we see that outsiders were dramatically more likely to win as a PDP-Laban candidate than former LP mayors, consistent with our fourth hypothesis (H4).

Table 7: **Effect on 2019 Local Elections**

<i>Dependent variable:</i>	(1)	(2)	(3)	(4)
	Incumbent Voteshare	Switched Party	Switched to PDP-Laban	PDP-Laban is Winner
RDD Estimate	.05+ (.03)	-.11* (.06)	-.04 (.09)	.19* (.09)
LP Mean	0.09	0.95	0.46	0.27
N	426	540	506	518
Optimal Bandwidth	.164	.227	.214	.171

Notes: Columns (1)-(4): Bias-corrected local linear polynomial RDD with CCT bandwidth. Outcomes (2) - (4) are indicator variables. (1) is differenced incumbent vote share (2016 vs 2019).

Our research design, unfortunately, does not allow us to identify whether it was the specific conduct of the drug war that helped outsider mayors successfully switch to and win as PDP-Laban candidates in 2019. There could be other mechanisms — although we have ruled out pork barrel spending via public works — such as the population endogenously becoming more favorable to outsiders due to the popularity of President Duterte. That said, the evidence is consistent with an electoral bump from aggressive drug war participation that led the new Duterte machine to throw resources behind these candidates.

5.3 Diagnostics and Placebo tests

We conducted a number of robustness tests to validate our research design. In Table 8 we carry out a placebo test demonstrating that the alignment of the mayor after the July 2016 start of the Duterte administration has no relationship with pre-Duterte police blotter reports. Table 9 extends this to pre-treatment covariates collected from the 2010 census. We find close to exact balance across treatment and control municipalities on a range of politically-important characteristics,

³⁹Refer back to Table 2 for an illustration of this dynamic.

including demographics, ethnic and religious background, and household assets.

In order for the difference-in-differences specification to be valid, we must also assume parallel trends in our outcomes of interest. Although this assumption cannot be proven, evidence of parallel pre-trends is a useful piece of evidence in favor. In Appendix Section A.3 we show that our main outcomes — drug-related crime reports, total crime reports and public works procurement amounts — are moving in nearly exact parallel during the period before Duterte takes office. The Appendix also contains robustness tests that exclude Metro Manila, change date and electoral margin cutoffs, iteratively drop small parties, implement alternative RDD specifications, employ difference-in-means and ANCOVA, test for personal differences in candidates, graphically explore pre-trends, check for spatial spillovers, and test clustering standard errors at different levels.

Table 8: **Placebo 1: No Relationship with Pre-Duterte Crime Rates**

<i>Dependent variable:</i>	(1) Drugs	(2) Assault	(3) Theft	(4) Total	(5) Drugs	(6) Assault	(7) Theft	(8) Total
OLS Estimate	-.01 (.03)	.02 (.06)	-.07 (.05)	-.04 (.11)				
RDD Estimate					.00 (.04)	.04 (.09)	-.03 (.07)	.09 (.17)
N	189	189	189	189	984	984	984	984
Region Fixed Effects	Yes	Yes	Yes	Yes				

Notes: Columns (1)-(4) Bantay Krimen blotter reports from 2015 to 1 July 2016, summed by municipality. Region fixed effects, Stata robust SE. Sample: Municipalities with very close (<5% margin of victory) for the 2016 mayoral election. Columns (5)-(8): bias-corrected local linear polynomial RDD with CCT bandwidth.

Table 9: **Placebo 2: No Relationship with 2010 Census Characteristics**

<i>Dependent var.</i>	(1) Population	(2) % Male	(3) Household Size	(4) % Overseas Worker	(5) Education	(6) % age 18-39
Outsider Mayor	104 (4378)	-.00 (.00)	.03 (.07)	-.00 (.00)	.01 (.03)	.00 (.01)
N	187	187	187	187	187	187
<i>Dependent var.:</i>	(7) % Single Catholic	(8) % Roman	(9) % Muslim	(10) % Indig. People	(11) % Good Home Qual.	
Outsider Mayor	-.01 (.00)	.03 (.02)	-.00 (.01)	-.03 (.03)	.00 (.00)	
N	187	187	187	187	187	

Notes: 2010 Filipino census, averages by municipality. Region fixed effects, Stata robust SE. Sample: Municipalities with very close (<5% margin of victory) for the 2016 mayoral election.

5.4 Alternative Explanations

Readers might be concerned about several alternative interpretations for the empirical regularities we uncover. For one, perhaps drug war conduct and patronage reflect generic partisan alignment rather than the more complicated insider/outsider dynamic we describe. We find this to be unlikely due to the fact that the ideological and programmatic differences between PDP-Laban and the Liberal Party are virtually non-existent, as evidenced by the ease with which politicians switched parties post-election.⁴⁰ This is consistent with Filipino politics at large, where partisan labels are historically uncorrelated with candidates' ideology (Hicken, 2014). In addition, exceedingly few mayors during the 2016-2019 cycle were co-partisans with Duterte or chose to adopt his ideological platform during the campaign. Of the 189 close mayoral elections in our main sample, just six winning mayors come from Duterte's PDP-Laban. Not surprisingly, when we drop those from the sample, the results remain unchanged.

Another account is that results we find may be driven by LP mayors benefiting from the drug trade more than outsider mayors. If LP mayors in 2016 get a more lucrative cut of the drug trade due to their insider status, they would have more to lose from a crackdown. Once an outsider wins office, however, we would expect them to over time gain access to rents, including illegal drug payments. With that in mind, we would expect the gap between insiders and outsiders in terms of drug raids to initially be quite large, but then converge over time as outsiders gain access. In contrast, as seen in Figure 5, there is an initially small but then growing divergence between the two types of mayors. At the same time, we think of illegal rents from the drug trade as akin to illegal rents from procurement-related corruption, so this is in some sense just a different mechanism for the same insider vs outsider dynamic we describe.

Last, imagine that PNP officers want to aggressively implement the drug war because they expect to be more likely to be promoted if they comply with the President's policy. Insider mayors, as compared to outsiders, might have either greater desire or capacity to restrain their local PNP chief from excesses relative to their outsider counterparts. We think a story in which LP mayors have a greater *desire* to restrict the drug war to be a less-likely, but still reasonable, mechanism for the theory we advance: by restraining the police less, outsiders show their loyalty to the President.⁴¹ At the same time, we view an alternative where insiders have a greater *capacity* to restrict the drug war to be unlikely given our finding that vigilante killings are just as likely in municipalities governed by insider mayors.

⁴⁰<https://www.bworldonline.com/the-decline-of-philippine-political-parties/>

⁴¹Because of the prevailing political winds — the drug war polls very well among civilians — too strongly restraining the police from pursuing the highly popular drug war seems at odds with insider mayors' re-election incentives, however.

6 Discussion

We often think of populist politics as being driven by national figures who can uniquely capture a country's imagination with norm-defying, anti-establishment policies. But once in power, populist leaders must deliver on policy proposals that establishment elites deem not only at odds with their preferences but also undermine basic democratic institutions and rights. It is thus not immediately clear how outsider national leaders can implement their signature policies. In this study, we show that local political incentives turn out to be highly influential in how a signature agenda item is implemented. Far from the lofty rhetoric, we find that local outsiders, who struggle to access patronage resources, enthusiastically implement an outsider leader's signature policy in order to gain the upper hand come re-election time.

Examining the Philippines, we find that outsider mayors are significantly disadvantaged in the distribution of pork, specifically in disbursement categories that are ripe for corruption: road contracts and flood abatement projects. They get about 3,000 pesos (roughly 60 U.S. dollars) per person less during the Duterte era, which is about 60% of what insiders were able to secure. In turn, they choose to implement Duterte's drug war with abandon: municipal police stations with outsider mayors report 40% more drug-related incidents and have 60% greater probability of killing a drug suspect than those in municipalities with insider mayors. The efforts of local outsiders are rewarded in subsequent elections - they are able to align themselves with Duterte, and are able to win re-election at a higher rate than otherwise, often under Duterte's PDP-LABAN party label.

After three years of the Duterte regime, politicians who were originally outsiders have now become insiders. As co-partisans with a popular president, these mayors were able to develop a new patronage network oriented around Duterte, the new political gravitational center. This network on its face reflects clientelistic networks of the past, with a grand coalition in the Philippine Congress that will be expected to direct resources to allies at the lower level going forward.

From a policy perspective, our findings suggest a somewhat controversial upshot: limiting access to corruption and patronage means that outsider local politicians have a strong incentive to join in when a populist leader emerges. In the case of outsider mayors in the Philippines, for example, allowing them to have greater access to pork and claim credit for government- or foreign-aid projects (e.g. Cruz and Schneider (2017)), may lessen their incentive to implement a brutal drug war.

It remains to be seen how the emerging Duterte political alliance under a unified PDP-Laban banner will govern in the second half of his term. Will the drug war continue to be prosecuted as aggressively as during the initial days of his presidency? Or will the patronage network revert back to standard operating procedures: pork barrel politics and clientelism — an unsavory, but decidedly less violent political equilibrium? Initial indications are that the administration is taking their foot off the drug war pedal, even going as far as to briefly appoint Vice President Leny Robredo (an opposition

politician) as the point person for the war on drugs. This would suggest that having compiled a new network of insiders Duterte now will focus on more traditional politicking ahead of the next election, which may feature his daughter as a successor candidate. There's nothing more traditional in Philippine politics than the familial political dynasty.

References

- Abinales, Patricio and Donna Amoroso (2005). *State and Society in the Philippines*. Pasig City: Anvil Publishing Inc.
- Akkerman, Agnes , Cas Mudde, and Andrej Zaslove (2014). How populist are the people? measuring populist attitudes in voters. *Comparative Political studies* 47(9), 1324–1353.
- Auerbach, Adam Michael (2016). Clients and communities: The political economy of party network organization and development in india's urban slums. *World Politics* 68(1), 111–148.
- Barreca, Alan I , Jason M Lindo, and Glen R Waddell (2016). Heaping-induced bias in regression-discontinuity designs. *Economic Inquiry* 54(1), 268–293.
- Bertrand, Marianne , Esther Duflo, and Sendhil Mullainathan (2004). How much should we trust differences-in-differences estimates? *The Quarterly journal of economics* 119(1), 249–275.
- Bohlken, Anjali Thomas (2018). Targeting ordinary voters or political elites? why pork is distributed along partisan lines in india. *American Journal of Political Science* 62(4), 796–812.
- Brännström, Lars , Björn Trolldal, and Martin Menke (2016). Spatial spillover effects of a community action programme targeting on-licensed premises on violent assaults: evidence from a natural experiment. *Journal of Epidemiology Community Health* 70(3), 226–230.
- Brollo, Fernanda and Ugo Troiano (2016). What happens when a woman wins an election? evidence from close races in brazil. *Journal of Development Economics* 122, 28–45.
- Calonico, Sebastian , Matias D Cattaneo, and Max H Farrell (2018). On the effect of bias estimation on coverage accuracy in nonparametric inference. *Journal of the American Statistical Association* 113(522), 767–779.
- Calonico, Sebastian , Matias D Cattaneo, Max H Farrell, and Rocio Titiunik (2017). rdrobust: Software for regression-discontinuity designs. *The Stata Journal* 17(2), 372–404.
- Calonico, Sebastian , Matias D Cattaneo, and Rocio Titiunik (2014). Robust nonparametric confidence intervals for regression-discontinuity designs. *Econometrica* 82(6), 2295–2326.
- Calvo, Ernesto and Maria Victoria Murillo (2013). When parties meet voters: Assessing political linkages through partisan networks and distributive expectations in argentina and chile. *Comparative Political Studies* 46(7), 851–882.
- Canare, Tristan A , Ronald U Mendoza, and Mario Antonio Lopez (2018). An empirical analysis of vote buying among the poor: Evidence from elections in the philippines. *South East Asia Research* 26(1), 58–84.
- Cattaneo, Matias D , Brigham R Frandsen, and Rocio Titiunik (2015). Randomization inference in the regression discontinuity design: An application to party advantages in the us senate. *Journal of Causal Inference* 3(1), 1–24.
- Cattaneo, Matias D , Michael Jansson, and Xinwei Ma (2018). Manipulation testing based on density discontinuity. *The Stata Journal* 18(1), 234–261.
- Caughey, Devin and Jasjeet S Sekhon (2011). Elections and the regression discontinuity design: Lessons from close us house races, 1942–2008. *Political Analysis* 19(4), 385–408.
- Cruz, Cesi , Julien Labonne, and Pablo Querubin (2017). Politician family networks and electoral outcomes: Evidence from the philippines. *American Economic Review* 107(10), 3006–37.

- Cruz, Cesi and Christina J Schneider (2017). Foreign aid and undeserved credit claiming. *American Journal of Political Science* 61(2), 396–408.
- Darroch, Gordon (2017). Netherlands 'will pay the price' for blocking turkish visit âĀŞ erdogan. *The Guardian*.
- De Dios, Emmanuel (2007). Local politics and local economy. In A. Balisacan and H. Hill (Eds.), *The Dynamics of Regional Development: The Philippines in East Asia*, pp. 157–203. Massachusetts: Edward Elgar Publishing Inc.
- De la Cuesta, Brandon and Kosuke Imai (2016). Misunderstandings about the regression discontinuity design in the study of close elections. *Annual Review of Political Science* 19, 375–396.
- Dell, Melissa (2015). Trafficking networks and the mexican drug war. *American Economic Review* 105(6), 1738–79.
- Eggers, Andrew C , Anthony Fowler, Jens Hainmueller, Andrew B Hall, and James M Snyder Jr (2015). On the validity of the regression discontinuity design for estimating electoral effects: New evidence from over 40,000 close races. *American Journal of Political Science* 59(1), 259–274.
- Farrell, Graham and John Thorne (2005). Where have all the flowers gone?: evaluation of the taliban crackdown against opium poppy cultivation in afghanistan. *International Journal of Drug Policy* 16(2), 81–91.
- Fergusson, Leopoldo , Horacio Larreguy, and Juan Felipe Riaño (2015, September). Political constraints and state capacity: Evidence from a land allocation program in Mexico. *Development Bank of Latin America Working Paper*.
- Grembi, Veronica , Tommaso Nannicini, and Ugo Troiano (2016). Do fiscal rules matter? *American Economic Journal: Applied Economics*, 1–30.
- Grindle, Merilee S (2017). *Politics and policy implementation in the Third World*. Princeton: Princeton University Press.
- Hall, Andrew B (2015). What happens when extremists win primaries? *American Political Science Review* 109(1), 18–42.
- Hicken, Allen (2009, January). *Building Party Systems in Developing Democracies*. New York: Cambridge University Press.
- Hicken, Allen (2011). Clientelism. *Annual review of political science* 14, 289–310.
- Hicken, Allen (2014). Party and party system institutionalization in the philippines. *Party System Institutionalization in Asia: Democracies, autocracies, and the shadows of the past* 307.
- Holland, Alisha C (2013). Right on crime? conservative party politics and" mano dura" policies in el salvador. *Latin American Research Review*, 44–67.
- Human Rights Watch (2017). *License to Kill: Philippine Police Killings in Duterte's War on Drugs*. Human Rights Watch.
- Hutchcroft, Paul (2008). The arroyo imbroglio in the philippines. *Journal of Democracy* 19(1), 141–155.
- Hutchcroft, Paul and Joel Rocamora (2003). Strong demands and weak institutions: The origins and evolution of the democratic deficit in the philippines. *Journal of East Asian Studies* 3(2), 259–292.
- Inglehart, Ronald F and Pippa Norris (2016). Trump, brexit, and the rise of populism: Economic have-nots and cultural backlash. *HKS Working Paper No. RWP16-026*.
- Jung, Danielle F. and Dara Kay Cohen (Forthcoming). *Lynching and Local Justice: the Political Economy of Legitimacy and Accountability in Weak States*. Cambridge, UK: Cambridge University Press, Cambridge Elements: Political Economy Series (ed. David Stasavage).

- Kitschelt, Herbert , Steven I Wilkinson, et al. (2007). *Patrons, clients and policies: Patterns of democratic accountability and political competition*. Cambridge University Press.
- Lee, David S (2001). The electoral advantage to incumbency and voters' valuation of politicians' experience: A regression discontinuity analysis of elections to the us.. Technical report, National bureau of economic research.
- Lee, David S (2008). Randomized experiments from non-random selection in us house elections. *Journal of Econometrics* 142(2), 675–697.
- Lee, David S and Thomas Lemieux (2010). Regression discontinuity designs in economics. *Journal of economic literature* 48(2), 281–355.
- Magaloni, Beatriz (2006). *Voting for autocracy: Hegemonic party survival and its demise in Mexico*, Volume 296. Cambridge University Press Cambridge.
- McCoy, Alfred W (2009). *An anarchy of families: State and family in the Philippines*. Univ of Wisconsin Press.
- McCrary, Justin (2008). Manipulation of the running variable in the regression discontinuity design: A density test. *Journal of econometrics* 142(2), 698–714.
- McKenzie, David (2012). Beyond baseline and follow-up: The case for more t in experiments. *Journal of development Economics* 99(2), 210–221.
- McKetin, Rebecca , Nicholas Kozel, Jeremy Douglas, and Robert Ali (2008). The rise of methamphetamine in southeast and east asia. *Drug and Alcohol Review* 27(3), 220–228.
- Mendoza, Ronald U , Edsel L Beja Jr, Victor S Venida, and David B Yap (2016). Political dynasties and poverty: measurement and evidence of linkages in the philippines. *Oxford Development Studies* 44(2), 189–201.
- Mudde, Cas (2004). The populist zeitgeist. *Government and opposition* 39(4), 541–563.
- Mudde, Cas (2007). *Populist radical right parties in Europe*. Cambridge University Press Cambridge.
- Mudde, Cas (2013). Three decades of populist radical right parties in western europe: So what? *European Journal of Political Research* 52(1), 1–19.
- Pepinsky, Thomas (2009). *Economic crises and the breakdown of authoritarian regimes: Indonesia and Malaysia in comparative perspective*. Cambridge University Press.
- Pepinsky, Thomas (2019). Migrants, minorities, and populism in asia. Cornell University Working Paper.
- Prak Chan Thul (2017, February). Cambodia promises harsher drug crackdown as arrests soar. *Reuters*.
- Pressman, Jeffrey L and Aaron Wildavsky (1984). *Implementation: How great expectations in Washington are dashed in Oakland*. University of California Press.
- Quackenbush, Casey (2018, July). Hundreds killed in bangladesh since philippines-style drug crackdown began, rights groups say. *Time*.
- Querubin, Pablo (2016). Family and politics: Dynastic persistence in the philippines. *Quarterly Journal of Political Science* 11(2), 151–181.
- Ramos, Christia Marie (2019, Jan). House panel to call more DPWH execs over flood control scam. *Inquirer*.

- Ravanilla, Nico (2017). Motives in pork distribution: Partisan bias or patronage? *Working Paper*. URL: <https://tinyurl.com/q16msjk>.
- Ravanilla, Nico (2019). The multimember plurality system in the philippines & its implications. In P. Hutchcroft (Ed.), *Strong Patronage, Weak Parties: The Case of Electoral System Redesign in the Philippines*. Manila: Anvil.
- Ressa, Maria (2015). #TheLeaderIWant: Leadership, Duterte-style. URL: https://www.youtube.com/watch?time_continue=8&v=ow9FUAHCclk.
- Riker, William H (1982). *Liberalism against populism*. San Francisco: WH Freeman.
- Sachs, Jeffrey D (1989). Social conflict and populist policies in latin america.
- Scholz, John T , Jim Twombly, and Barbara Headrick (1991). Street-level political controls over federal bureaucracy. *The American Political Science Review* 85(3), 829–850.
- Seligson, Mitchell A (2007). The rise of populism and the left in latin america. *Journal of Democracy* 18(3), 81–95.
- Shenoy, Ajay (2018). Regional development through place-based policies: Evidence from a spatial discontinuity. *Journal of Development Economics* 130, 173–189.
- Sidel, John (1999). *Capital Coercion and Crime: Bossism in the Philippines*. Stanford, California: Stanford University Press.
- Sinclair, Betsy , Margaret McConnell, and Donald P Green (2012). Detecting spillover effects: Design and analysis of multilevel experiments. *American Journal of Political Science* 56(4), 1055–1069.
- Slater, Dan (2013). Democratic careening. *World Politics* 65(4), 729–763.
- Spruyt, Bram , Gil Keppens, and Filip Van Droogenbroeck (2016). Who supports populism and what attracts people to it? *Political Research Quarterly* 69(2), 335–346.
- Stokes, Susan C , Thad Dunning, Marcelo Nazareno, and Valeria Brusco (2013). *Brokers, voters, and clientelism: The puzzle of distributive politics*. Cambridge University Press.
- United Nations Office on Drugs and Crime (2019). Synthetic drugs in east and south-east asia. *Global SMART Program*.
- Wantchekon, Leonard (2003). Clientelism and voting behavior: Evidence from a field experiment in benin. *World politics* 55(3), 399–422.
- Weisburd, David , Laura A Wyckoff, Justin Ready, John E Eck, Joshua C Hinkle, and Frank Gajewski (2006). Does crime just move around the corner? a controlled study of spatial displacement and diffusion of crime control benefits. *Criminology* 44(3), 549–592.

Outsiders vs. Insiders: How Local Politics Drives Duterte's War on Drugs in the Philippines Supplemental Information

A.1 Additional results and robustness

A.1.1 All crime types

Table A.1: Effect on Blotter Report Rates by Crime Category (Diff-in-Diff)

	(1)	(2)	(3)	(4)	(5)	(6)	(7)	(8)	(9)
<i>DV:</i>	Drug- related	Homicide	Car Theft	Assault	Rape	Robbery	Theft	Car Accident	All Violent
DiD Estimate	.36* (.18)	.13 (.10)	.05 (.04)	-.13 (.24)	-.01 (.03)	.04 (.06)	-.04 (.13)	.16 (.57)	.04 (.32)
N	378	378	378	378	378	378	378	378	378
Clusters	189	189	189	189	189	189	189	189	189

Notes: Outcomes are Bantay Krimen blotter reports from 2015 Dec 2018, summed by municipality. Municipality and period fixed effects, and clustered standard errors. Sample: Municipalities with very close (<5% margin of victory) for the 2016 mayoral election.

Table A.2: Effect on Blotter Report Rates by Crime Category (R.D.D.)

	(1)	(2)	(3)	(4)	(5)	(6)	(7)	(8)	(9)
<i>DV:</i>	Drug- related	Homicide	Car Theft	Assault	Rape	Robbery	Theft	Car Accident	All Violent
RDD Estimate	.46* (.21)	.24 (.16)	.09 (.06)	-.14 (.28)	-.03 (.04)	.06 (.08)	-.07 (.16)	.03 (.65)	.04 (.35)
N	494	445	463	589	523	523	555	517	633
Opt BWidth	.158	.141	.147	.213	.174	.173	.194	.169	.236

Notes: Outcomes are Bantay Krimen blotter reports from 2015 Dec 2018, summed by municipality. Bias-corrected local linear polynomial RDD with CCT bandwidth and robust errors, outcomes differenced (pre-Duterte subtracted from post-Duterte). Running variable outsider vote share margin.

A.1.2 ACLED: Number of Fatalities

Table A.3: **Effect on ACLED-reported fatalities (log transformed)**

	(1)	(2)	(3)
<i>Dependent variable:</i>	Any Fatal	PNP Fatal	Vigilante Fatal
Diff-in-Diff Estimate	.27+ (.15)	.27* (.14)	.04 (.12)
N	378	378	378
Clusters	189	189	189

Notes: Outcome is Inverse Hyperbolic Sine-transformed fatality counts (similar to log transformation but defined at zero). Municipality and period fixed effects, and clustered standard errors. Sample: Municipalities with very close (<5% margin of victory) for the 2016 mayoral election.

A.1.3 Procurement Category Details

Table A.4: **Procurement Category Details (Diff-in-Diff)**

	(1)	(2)	(3)	(4)	(5)
<i>Dependent variable:</i>	Total Procurement	Roads	Flood Abatement	Schools	Health
Diff-in-Diff Estimate	-2.22* (.90)	-1.05+ (.55)	-.93* (.38)	-.00 (.38)	-.13 (.11)
N	378	378	378	378	378
Clusters	189	189	189	189	189

Notes: Outcomes are in millions of Philippine Pesos (about 50 Pesos per USD) per 1,000 population. Municipality and period fixed effects, and clustered standard errors. Sample: Municipalities with very close (<5% margin of victory) for the 2016 mayoral election.

Table A.5: Procurement Category Details (R.D.D.)

	(1)	(2)	(3)	(4)	(5)
<i>Dependent variable:</i>	Total	Roads	Flood	Schools	Health
	Procurement		Abatement		
RDD Estimate	-3.62**	-2.09**	-.97*	-.38	-.21
	(1.16)	(.78)	(.45)	(.41)	(.14)
N	450	426	538	496	567
Opt BWidth	.143	.131	.184	.158	.201

Notes: Outcomes are in millions of Philippine Pesos (about 50 Pesos per USD) per 1,000 population. Bias-corrected local linear polynomial RDD with CCT bandwidth and robust errors, outcomes differenced (pre-Duterte subtracted from post-Duterte). Running variable outsider vote share margin.

Table A.6: Effect on Blotter Reports: Dropping PDP-Laban Municipalities

	Blotter Reports				ACLED		
	(1)	(2)	(3)	(4)	(5)	(6)	(7)
<i>Dependent variable:</i>	Drug-related	Assault	Theft	Total	Any Fatal	PNP Fatal	Vigilante Fatal
Diff-in-Diff Estimate	.36*	-.16	-.06	-.07	.12+	.15*	-.03
	(.18)	(.25)	(.12)	(.43)	(.07)	(.07)	(.06)
N	366	366	366	366	366	366	366
Clusters	183	183	183	183	183	183	183

Notes: Columns (1)-(7) report difference-in-differences interaction term (β_3), includes municipality and period fixed effects, SE clustered by municipal cluster (municipalities impacted by the same close election municipality); Sample: municipalities with very close (<5%) margin of victory.

A.1.4 Placebo: Pre-Duterte ACLED outcomes

Table A.7: **Placebo test: Pre-Duterte ACLED outcomes**

<i>Dependent variable:</i>	(1)	(2)	(3)	(4)
	Any Fatal Incident	Log Fatalities	Any Fatal Incident	Log Fatalities
OLS Estimate	-.04 (.03)	-.04 (.03)		
RDD Estimate			-.06 (.04)	-.05 (.04)
N	189	189	526	647
Opt BWidth			.176	.244

Notes: Notes: Columns (1)-(2) ACLED incidents from 1 Jan 2016 to 1 July 2016, summed by municipality. Region fixed effects, Stata robust SE. Sample: Municipalities with very close (<5% margin of victory) for the 2016 mayoral election. Columns (3)-(4): bias-corrected local linear polynomial RDD with CCT bandwidth and robust errors.

A.1.5 Placebo: Pre-Duterte Procurement

Table A.8: **Effect on Public Works Procurement**

<i>Dep var:</i>	(1)	(2)	(3)	(4)	(5)	(6)
	Total Procurement	Easy Corruption	Difficult Corruption	Total Procurement	Easy Corruption	Difficult Corruption
OLS Estimate	.70 (.91)	.87 (.71)	-.10 (.17)			
RDD Estimate				.87 (.98)	.86 (.75)	-.05 (.22)
N	189	189	189	558	549	557
Opt BWidth				.196	.191	.195

Notes: Outcomes are in millions of Philippine Pesos (about 50 Pesos per USD) per 1,000 population from 2013 to 1 July 2016. Columns (1)-(3) report difference-in-differences interaction term (β_3), includes municipality and period fixed effects, SE clustered by municipality. * = $p < .05$; Sample: municipalities with very close (<5%) margin of victory. Columns (4)-(6): Bias-corrected local linear polynomial RDD with CCT bandwidth and robust errors; outcomes differenced (pre-Duterte subtracted from post-Duterte); running variable is outsider vote share margin.

A.1.6 Placebo: Non-competitive elections

In Table A.9 we examine what happens in outsider vs. insider municipalities when the winner prevails by a larger margin (greater than 5 percentage points). Among these races the median margin of victory is 22 percentage points (mean is 28 percentage points).

Table A.9: **Null effects in non-competitive municipalities**

<i>Dependent variable:</i>	(1) Drugs	(2) Assault	(3) Theft	(4) Total	(5) ACLED (any)	(6) PNP killing	(7) Vigilante killing
Diff-in-Diff Estimate	.06 (.10)	-.09 (.12)	-.12 (.07)	-.17 (.21)	.02 (.04)	.01 (.03)	.03 (.03)
N	1590	1590	1590	1590	1590	1590	1590
Clusters	795	795	795	795	795	795	795

Notes: Columns (1)-(7) report the difference-in-differences interaction term (β_3) and include municipality and period fixed effects, SE clustered by municipality. * = $p < .05$; Sample: municipalities with (>5%) margin of victory (not close).

Table A.10 presents the interacted ‘triple difference’ model, where we observe that the differences between close and not as close elections are statistically significantly different from each other.

Table A.10: **Effects in competitive and non-competitive municipalities**

<i>Dependent variable:</i>	(1) Drugs	(2) Assault	(3) Theft	(4) Total	(5) ACLED (any)	(6) PNP killing	(7) Vigilante killing
Diff-in-Diff	.06 (.10)	-.09 (.12)	-.12 (.07)	-.17 (.21)	.02 (.04)	.01 (.03)	.03 (.03)
Diff-in-diff × Competitive	.30+ (.20)	-.04 (.27)	.08 (.14)	.22 (.47)	.12+ (.08)	.15* (.07)	-.05 (.07)
N	1968	1968	1968	1968	1968	1968	1968
Clusters	984	984	984	984	984	984	984

Notes: Columns (1)-(7) report the difference-in-differences interaction term (β_3) and the triple interaction term (diff-in-diff × Competitive dummy; 5 percentage point margin of victory or smaller), and include municipality and period fixed effects, SE clustered by municipality and the secondary constituent term of the triple interaction (competitive × post period) that is not absorbed by the fixed effects.

A.1.7 Robustness: Excluding National Capital Region (Metro Manila)

In Table A.11 we find that all the main results remain after removing municipalities in Metro Manila, where some of the greatest excesses of the drug war were reported.

A.1.8 Robustness: Changing cut-off date to May 10th, 2016

President Duterte’s opponent, Mar Roxas, conceded the 2016 presidential election on May 10th, 2016. Conceivably, although Duterte did not take power until July, police and vigilantes may have heard his campaign slogans and began implementing elements of the drug war as soon as they heard he had won. We re-run the analysis using May 10th as the beginning of the Duterte era, finding in Table A.12 that the results remain the same.

Table A.11: **Main effects remain after excluding Metro Manila**

<i>Dependent variable:</i>	(1) Drugs	(2) Assault	(3) Theft	(4) Total	(5) ACLED (any)	(6) PNP killing	(7) Vigilante killing
Diff-in-Diff	.27+ (.16)	-.12 (.25)	-.06 (.13)	.02 (.43)	.14* (.07)	.16* (.07)	-.03 (.06)
N	374	374	374	374	374	374	374
Clusters	187	187	187	187	187	187	187

Notes: Columns (1)-(7) report the difference-in-differences interaction term (β_3) and include municipality and period fixed effects, SE clustered by municipality. Sample: Municipalities with close (<5% margin of victory) for the 2016 mayoral election, excluding any municipalities in the National Capital Region (Metro Manila).

Table A.12: **Main effects remain after changing Duterte period cutoff**

<i>Dependent variable:</i>	(1) Drugs	(2) Assault	(3) Theft	(4) Total	(5) ACLED (any)	(6) PNP killing	(7) Vigilante killing
Diff-in-Diff	.35+ (.19)	-.11 (.28)	-.03 (.15)	.13 (.48)	.14* (.07)	.15* (.07)	.00 (.06)
N	378	378	378	378	378	378	378
Clusters	189	189	189	189	189	189	189

Notes: Columns (1)-(7) report the difference-in-differences interaction term (β_3) and include municipality and period fixed effects, SE clustered by municipality. Sample: Municipalities with close (<5% margin of victory) for the 2016 mayoral election. The "post" period begins May 10, 2016 rather than July 1, 2016.

A.1.9 Robustness: Iterative dropping non-LP parties and independents

Some readers may be concerned that the results are driven by a particular party or by independents. In the following two tables, we iteratively drop independents and then each of the five largest non-LP parties from the analysis to see if the results are significantly affected.

We find that results are robust to the exclusion of each of the parties, despite the reduction in statistical power. In Table A.13 we find that the police blotter results are very similar to our main results; the one difference is for the NPC party, where the parameter does drop to .27 and marginally statistically insignificant. In Table A.14 we find consistent and statistically significant results across the board.

We do not that the results when removing the NPC (Nationalist People's Congress) are weaker than the others, although the effects are not statistically significantly different. The NPC is a conservative political movement that has generally been supporting of "tough on crime" initiatives. The results indicate that the NPC's ideological predilection may contribute a small amount to our overall findings.

Table A.13: **Police blotter results remain after dropping parties**

	(1)	(2)	(3)	(4)	(5)	(6)
<i>Dependent variable:</i>	Drugs-related Police Blotter reports					
<i>Party dropped:</i>	Independents	PDP Laban	NUP	UNA	NP	NPC
Diff-in-Diff	.44*	.36*	.39*	.39*	.34+	.27
	(.20)	(.18)	(.18)	(.19)	(.19)	(.19)
N	354	366	370	340	350	336
Clusters	177	183	185	170	175	168

Notes: Columns (1)-(7) report the difference-in-differences interaction term (β_3) and include municipality and period fixed effects, SE clustered by municipality. Sample: Municipalities with close (<5% margin of victory) for the 2016 mayoral election; each column drops candidates from the listed party.

Table A.14: **Fatal PNP incident results remain after dropping parties**

	(1)	(2)	(3)	(4)	(5)	(6)
<i>Dependent variable:</i>	Drugs-related Police Blotter reports					
<i>Party dropped:</i>	Independents	PDP Laban	NUP	UNA	NP	NPC
Diff-in-Diff	.18*	.15*	.15*	.17*	.16*	.14*
	(.07)	(.07)	(.07)	(.07)	(.07)	(.07)
N N	354	366	370	340	350	336
Clusters	177	183	185	170	175	168

Notes: Columns (1)-(7) report the difference-in-differences interaction term (β_3) and include municipality and period fixed effects, SE clustered by municipality. Sample: Municipalities with close (<5% margin of victory) for the 2016 mayoral election; each column drops candidates from the listed party.

A.1.10 Robustness: Cattaneo, Jansson, Ma (2018) sorting test

In addition to the McCrary (2008) sorting test, we implement in Stata a newer manipulation test that is more sensitive, developed by Cattaneo et al. (2018). Using local polynomial density estimation, the test produces a p value for the probability that there was manipulation along the boundary. We find no evidence for this $p=0.65$. See test output in Figure A.1 below.

Figure A.1: Output from Cattaneo et al. (2018) local polynomial manipulation test

RD Manipulation Test using local polynomial density estimation.				
Cutoff c = 0	Left of c	Right of c		
Number of obs	1288	680	Number of obs =	1968
Eff. Number of obs	568	452	Model =	unrestricted
Order est. (p)	2	2	BW method =	comb
Order bias (q)	3	3	Kernel =	triangular
BW est. (h)	0.167	0.164	VCE method =	jackknife
Running variable: unaligned_vote_share_margin.				
Method	T	P> T		
Robust	0.4536	0.6501		

A.1.11 Alternative RDD Specifications

Table A.15: Effect on Blotter Reports: IK Bandwidth

	(1)	(2)	(3)	(4)
<i>Dependent variable:</i>	Drug-related	Assault	Theft	Total
RDD Estimate	.52**	-.46	-.00	-.07
	(.19)	(.34)	(.18)	(.60)
N	638	441	453	445
Optimal Bandwidth	.237	.138	.144	.141

Notes: Bias-corrected local linear polynomial RDD with Imbens-Kalyanaraman bandwidth and conventional errors; outcomes differenced (pre-Duterte subtracted from post-Duterte); running variable is outsider vote share margin.

Table A.16: Effect on Blotter Reports: No bias correction

	(1)	(2)	(3)	(4)
<i>Dependent variable:</i>	Drug-related	Assault	Theft	Total
RDD Estimate	.39+	-.10	-.07	.03
	(.21)	(.28)	(.16)	(.49)
N	638	441	453	445
Optimal Bandwidth	.237	.138	.144	.141

Notes: Uncorrected local linear polynomial RDD with CCT bandwidth and conventional errors; outcomes differenced (pre-Duterte subtracted from post-Duterte); running variable is outsider vote share margin.

Table A.17: **Effect on Blotter Reports: Biased corrected, CCT errors**

	(1)	(2)	(3)	(4)
<i>Dependent variable:</i>	Drug-related	Assault	Theft	Total
RDD Estimate	.46+ (.24)	-.14 (.33)	-.07 (.18)	-.01 (.57)
N	494	589	555	626
Optimal Bandwidth	.158	.213	.194	.234

Notes: Bias-corrected local linear polynomial RDD with CCT bandwidth and CCT errors; outcomes differenced (pre-Duterte subtracted from post-Duterte); running variable is outsider vote share margin.

A.1.12 Two Percent Margin for Difference-in-differences

Using a 2 percent cutoff for “very close” elections, we find that the results are almost identical, however with larger standard errors due to the loss of sample size. Table A.18 shows that the effect on drug-related blotter reports remain ‘statistically significant’ at the $p < .1$ level.

Table A.18: **Effect on Post-Duterte Crime Rates**

	(1)	(2)	(3)	(4)	(5)	(6)
<i>Dependent variable:</i>	Drug-related	Theft	Assault	Homicide	Robbery	Rape
Diff-in-Diff Estimate	.40+ (.24)	.08 (.20)	.05 (.41)	.25 (.19)	.11 (.09)	.05 (.05)
LP Post-Duterte Mean	.95	.94	1.57	.60	.39	.33
N	164	164	164	164	164	164
Clusters	82	82	82	82	82	82

Notes: Municipality and period fixed effects, SE clustered by municipality, + = $p < .1$ Sample: Municipalities with very close (<2% margin of victory) for the 2016 mayoral election.

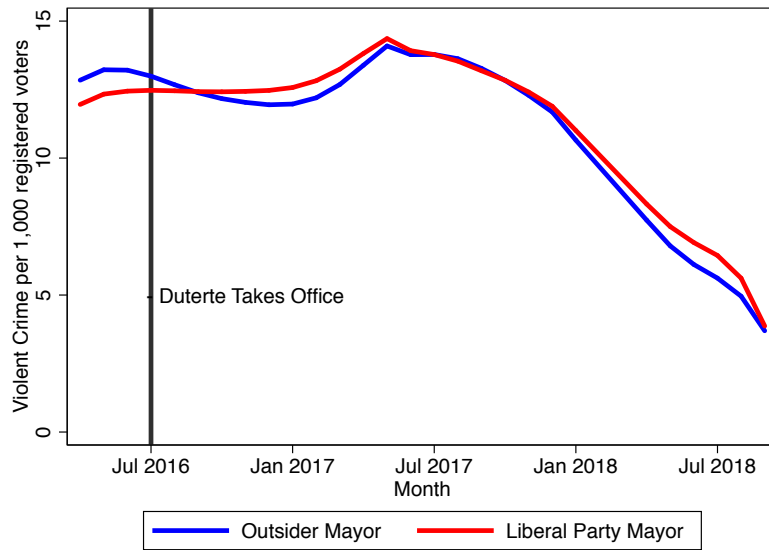
A.1.13 ANCOVA with 5 percent margin

Table A.19: **Effect on Post-Duterte Crime Rates (ANCOVA)**

	(1)	(2)	(3)	(4)	(5)	(6)
<i>Dependent variable:</i>	Drug-related	Theft	Assault	Homicide	Robbery	Rape
Outsider Mayor	.31* (.14)	-.06 (.11)	-.13 (.23)	.17 (.16)	-.01 (.05)	-.01 (.03)
N	189	189	189	189	189	189

Region fixed effects, controlling for pre-treatment crime rates * $p < .05$, Stata robust SE

Figure A.2: Violent Crime in Police Blotter Reports



Notes: Among 189 municipalities with very close (<5% margin of victory) for the 2016 mayoral election. Violent crime includes homicides, rape, robbery, assault.

A.1.14 2013 Electoral Cycle

Table A.20: 2013 Insider/Outsiders Re-election in 2016

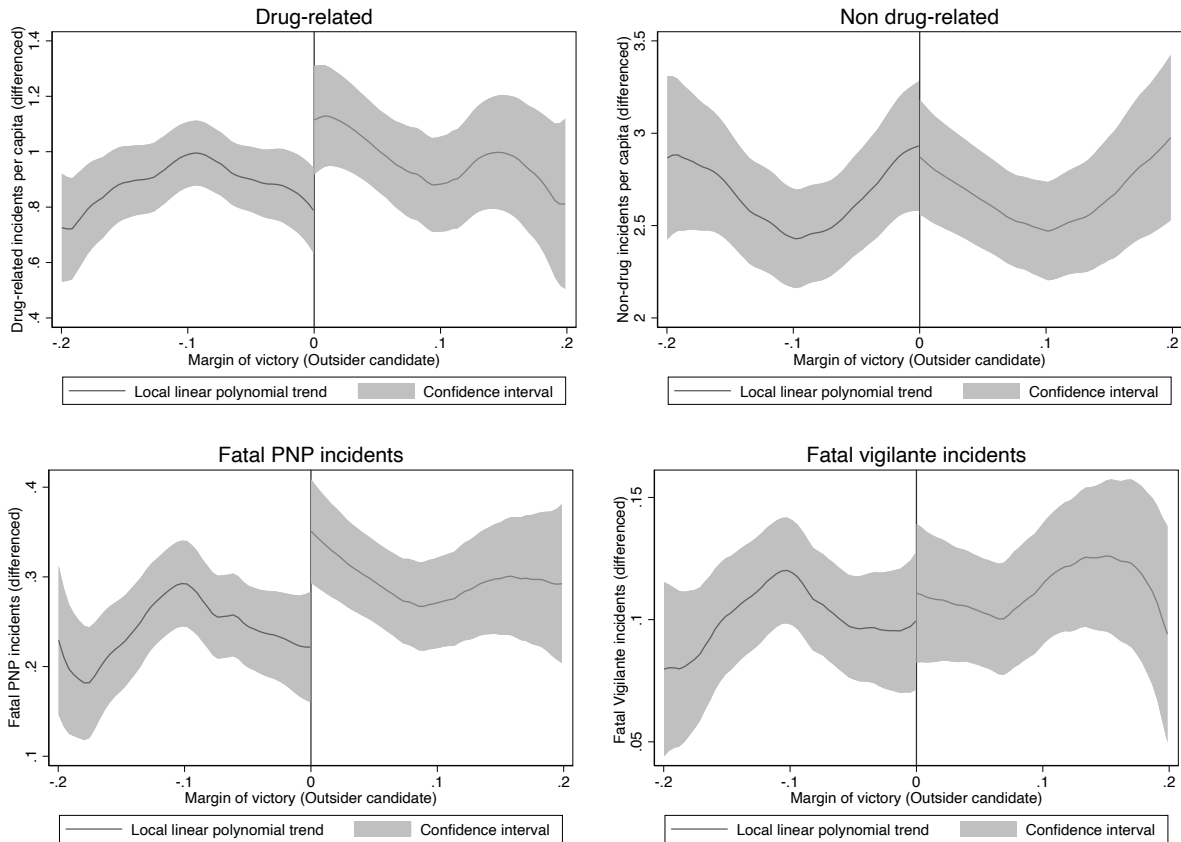
	(1)
<i>Dependent variable:</i>	Re-election in 2016 (binary)
Outsider Mayor (in 2013)	-0.17** (.06)
LP mayor mean	0.3
N	195

Notes: OLS, region fixed effects, Stata robust SE. Outcome is re-election indicator, based on last name and party. Sample: Municipalities with very close (<5% margin of victory) for the 2013 mayoral election.

A.2 RDD Plots

In Figure A.3 we show the RDD plots for the main outcomes and the relevant placebo outcome. We find significant differences for drug-related police blotter reports and ACLED-reported PNP-involved fatal incidents, but no difference for non-drug crime or vigilante killings. The differences for drug-related blotter reports and PNP killings occur where elections are competitive, converging to zero difference as the electoral margin becomes high and the competitiveness declines.

Figure A.3: RDD plots for main outcomes

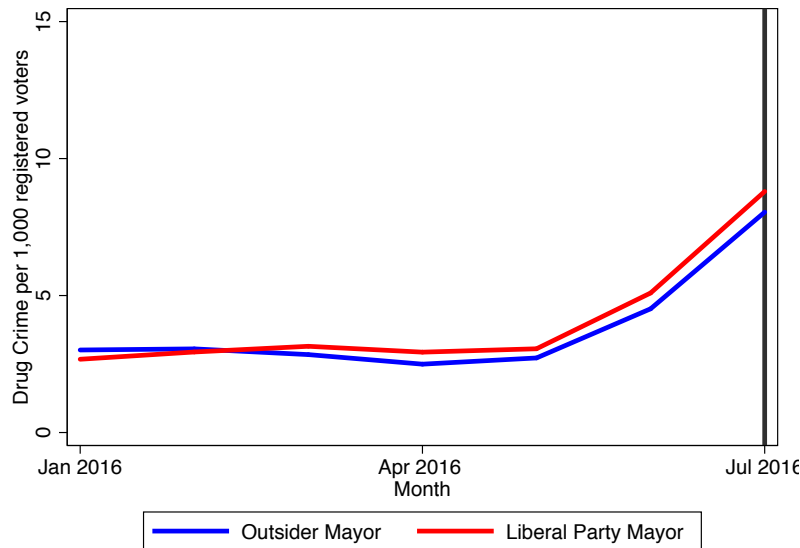


Notes: Using CCT bandwidth, local linear polynomial regression and biased-adjusted CCT confidence intervals. rug-related incidents are defined as blotter reports where primary designation is RA-9165, referring to the "Comprehensive Dangerous Drugs Act of 2002." Fatal PNP incidents are those where PNP officers killed a drug suspect.

A.3 Diagnostics

In Figures A.4, A.5 and A.6 we see that that the pre-Duterte trends for each of the main outcomes moves in parallel (nearly identically) between municipalities that had narrowly winning Liberal Party and outsider mayors in the May 2016 election.

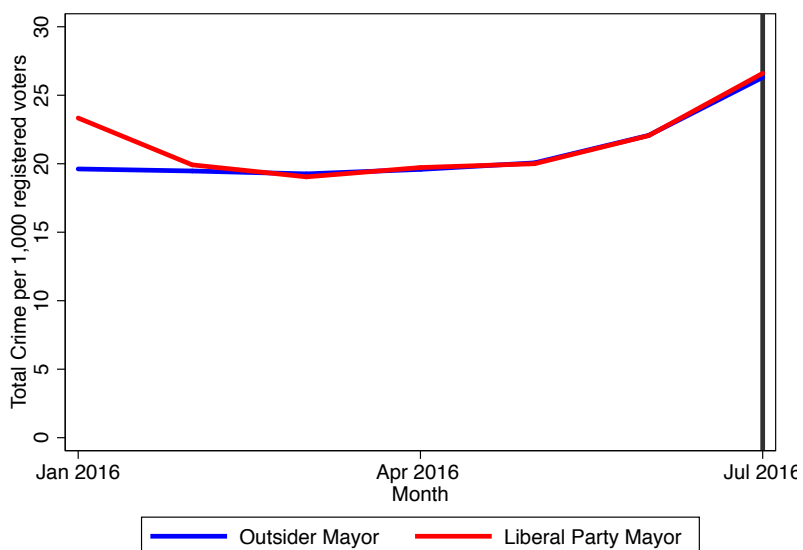
Figure A.4: **Drug-related Police Blotter Reports Trends pre-Duterte**



Notes: Among 189 municipalities with very close (<5% margin of victory) for the 2016 mayoral election. Drug-related crimes.

In addition to showing balance on the census characteristics of municipalities on either side of the close election boundary, we want to investigate how winning candidates among outsiders and insiders look similar and different. Using data on the candidates' names, political linkages and background, we show in Table A.21 that outsider and insider winners of competitive mayoral elections are identical in terms of gender, dynastic relationships (they all have family members that were previously in elected office), connections to other candidates (almost none were explicitly connected to candidates for legislature). We do find, however, that outsider winners are more likely to be first time candidates and/or first time winners. This is an important characteristic of the "outsider" label: insiders by definition must be connected, and thus likely previously elected, to be able to run under the LP label in 2016. That these candidates all have some pre-existing connection to the political class suggests that outsider status is about your political network not being in power, rather than being outside of politics entirely. Even Duterte himself, although clearly defined as an outsider to national politics, spent decades at the heart of politics in Davao City in Mindanao. Thus his "outsiderness" is about networks and connectedness rather than the political game as a whole.

Figure A.5: Total Police Blotter Reports Trends pre-Duterte



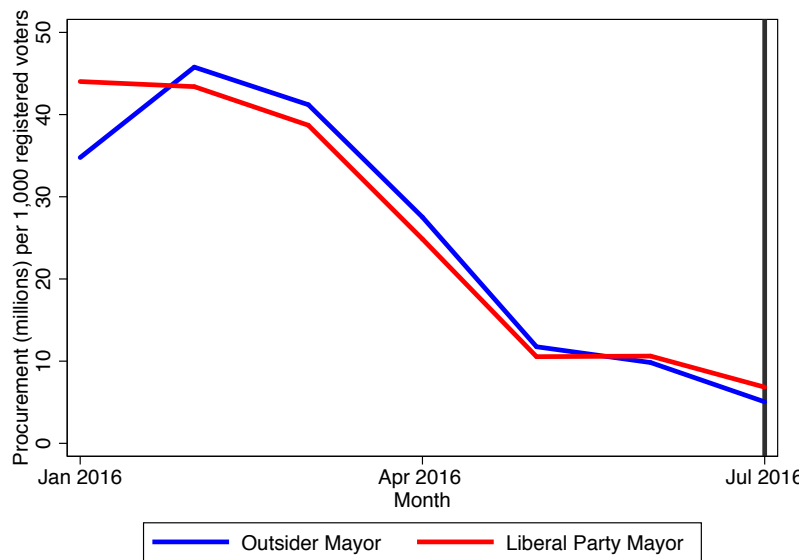
Notes: Among 189 municipalities with very close (<5% margin of victory) outcomes for the 2016 mayoral election. Excludes “pure” auto accidents (those that are not classified as homicide or other crime, e.g. hit and run).

Table A.21: Similarities and differences in candidates

	(1)	(2)	(3)	(4)	(5)	(6)
<i>Dependent variable:</i>	Connected to leg candidate	Paternal dynasty	Maternal dynasty	Female	First time candidate	First time winner
Outsider winner	.01 (.02)	.00 (.)	.00 (.)	.01 (.07)	.16* (.07)	.18** (.07)
N	189	189	189	189	189	189

Candidate characteristics. Region fixed effects, Stata robust SE. Sample: Municipalities with close (<5% margin of victory) for the 2016 mayoral election.

Figure A.6: Public Works Procurement Trends pre-Duterte



Notes: Among 189 municipalities with very close (<5% margin of victory) outcomes for the 2016 mayoral election. Millions of pesos of public works procurement per 1,000 population.

A.4 Spatial Spillovers

One potential threat to the research design used in this study is spillovers or interference between neighboring municipalities. Criminal activity can freely cross municipal boundaries, and as a nationalized police force the PNP in principle should be capable of coordinating activities across municipalities. If spatial spillovers exist and we do not account for them, SUTVA will be violated and our identification strategy breaks down (Sinclair et al., 2012). Previous studies on policing and community action against crime in developed countries suggest that indirect effects may occur (Weisburd et al., 2006; Brännström et al., 2016).

In the following section we test whether spillovers are likely to be occurring – finding that it is not prevalent – but nonetheless then show that the results hold when excluding municipalities most likely to have been impacted by spillovers. Finally, we use a more conservative spatial clustering approach for the standard errors, finding that the results hold nevertheless.

We think there are two reasons why spatial spillovers are not common for the context of this study. First, although the PNP is in theory organized in a hierarchical setting that allows for common actions across municipalities, in practice the municipal police chiefs, in collaboration with the mayor, have enormous discretion in choosing what to do. Police chiefs tend to prioritize what the local politician wants. Second, provincial and regional police directors have neither the information nor the time to micromanage each municipality.

In Table A.22 we analyze the 287 municipalities in the Philippines that had a neighboring municipality with a close election between an outsider and LP mayor. About 20% of our main sample is included here (those with close elections that also had a neighbor with a close election). We find that across the board there are no statistically significant differences between having an outsider vs an LP candidate win next door. This indicates that there are likely not important spillovers occurring from those close elections to their neighbors in terms of crime investigation, especially related to the drug war.

Table A.22: **Effect on Neighboring Municipalities**

<i>Dependent variable:</i>	Blotter Reports				ACLED		
	(1) Drug-related	(2) Assault	(3) Theft	(4) Total	(5) Any Fatal	(6) PNP Fatal	(7) Vigilante Fatal
Post Duterte * Outsider Neighbor (vs. LP)	.23 (.15)	.06 (.25)	.17 (.11)	.44 (.38)	.03 (.07)	.05 (.06)	-.04 (.07)
N	574	574	574	574	574	574	574
Clusters	126	126	126	126	126	126	126

Notes: Columns (1)-(7) report difference-in-differences interaction term (β_3), includes municipality and period fixed effects, SE clustered by municipal cluster (municipalities impacted by the same close election municipality); Sample: municipalities neighboring those with very close (<5%) margin of victory.

In Table A.23 we see that after excluding close-election municipalities that also had a neighbor with a close election (and thus may be exposed to spillovers), the estimates are nearly the same as the main difference-in-differences estimates shown in the Results section. The only difference is the wider confidence intervals as a result of dropping 20% of the sample.

Last, we adjust the standard errors to account for the possibility of correlation of errors across municipalities within the same province. In Table A.24 we find close to identical results to the main specifications we present in the body of the

Table A.23: **Effects on Crime; Excluding Units with Treated Neighbors**

<i>Dependent variable:</i>	Blotter Reports				ACLED		
	(1) Drug-related	(2) Assault	(3) Theft	(4) Total	(5) Any Fatal	(6) PNP Fatal	(7) Vigilante Fatal
Diff-in-Diff Estimate	.32+ (.19)	.03 (.29)	-.02 (.15)	.27 (.51)	.19* (.08)	.20* (.08)	-.07 (.06)
N	290	290	290	290	290	290	290
Clusters	145	145	145	145	145	145	145

Notes: Columns (1)-(7) report difference-in-differences interaction term (β_3), includes municipality and period fixed effects, SE clustered by municipality; Sample: Municipalities with (<5%) margin of victory, excluding those with a neighbor with a (<5%) margin of victory.

manuscript.

Table A.24: **Effects on Crime; Clustered at Province Level**

<i>Dependent variable:</i>	Blotter Reports				ACLED		
	(1) Drug-related	(2) Assault	(3) Theft	(4) Total	(5) Any Fatal	(6) PNP Fatal	(7) Vigilante Fatal
Diff-in-Diff Estimate	.36* (.17)	-.13 (.25)	-.04 (.15)	.05 (.49)	.14* (.07)	.16* (.07)	-.02 (.05)
N	378	378	378	378	378	378	378
Clusters	64	64	64	64	64	64	64

Notes: Columns (1)-(7) report difference-in-differences interaction term (β_3), includes municipality and period fixed effects, SE clustered by province; Sample: Municipalities with (<5%) margin of victory.

A.5 Public Opinion on the Duterte Drug War

The drug war has maintained almost uniformly high levels of self-reported support, despite criticism by the international press, political opposition and substantial human rights costs. Table A.25 shows summary statistics from Pulse Asia Survey that this support appears to cut across socio-economic boundaries, even though many people fear getting caught up in the drug war's effects themselves (with the exception of wealthy and upper middle income respondents).

Table A.25: Support for the Duterte Drug War by Social Class

Pulse Asia Socio-economic Class		Percent of sample	% Support Drug War	% Fear Drug War	% Support Double Barrel	% Approve Duterte
A, B & C	<i>Wealthy, upper middle</i>	9	89	47	78	84
D1	<i>Lower middle A</i>	53	90	73	73	80
D2	<i>Lower middle B</i>	21	88	69	72	78
E	<i>Impoverished</i>	17	91	66	70	86
Total			90	68	73	81

Notes: Based on Pulse Asia's "Ulat ng Bayan," which is a nationwide survey on the performance and ratings of the top Philippine government officials, averaged across quarterly reports from September 2016 to December 2018.

A.6 Census Data balance

The following table shows municipalities narrowly won by LP and outsider mayors compared on background characteristics, based on the Philippines' 2010 census. We see that the two groups of municipalities are nearly identical in terms of the thirteen variables.

We include the p-values of a t test between the two groups to illustrate why substantive, rather than “statistically significant,” differences between treatment and control groups are important. Looking at, for example, the percentage of residents that are unmarried, the proportion is basically identical, but because the test is well-powered and the variance low, the p-value of the t test is 0.16. If we had more observations, this could easily return a “statistically significant” difference, despite being effectively the same! In contrast, there is a 24% difference in the proportion of indigenous people in the LP vs outsider municipalities. This is because share IP is bi-modal – either you have close to all indigenous people or basically zero. This greatly increases the variance, rendering the p-value of the t test higher than the % single measure. In fact, we should be more worried — although in practice, not at all worried, given the difference-in-difference results — about the IP imbalance than the % single.

Table A.26: 2010 Census Data (balance test among close mayoral elections)

Variable	LP mayor	Outsider mayor	Diff.	% Diff.	T-test p value
Population	25749	26388	639	0.02	0.88
% Male	0.51	0.51	0.00001	0.00	0.99
Household Size	3.64	3.64	0.006	0.00	0.95
% working overseas (OFW)	0.026	0.024	-0.001	-0.04	0.63
Education Index	1.84	1.85	0.01	0.01	0.86
% aged 18-39	0.56	0.56	0.004	0.01	0.59
% Single (unmarried)	0.28	0.28	-0.001	0.00	0.16
% Roman Catholic	0.76	0.79	0.027	0.04	0.46
% Muslim	0.07	0.06	-0.01	-0.14	0.70
% Other Religion	0.17	0.15	-0.015	-0.09	0.55
% Indigenous People	0.21	0.15	-0.05	-0.24	0.26
% Home: good quality	0.36	0.36	-0.0001	0.00	0.98
% Home: bad quality	0.46	0.46	0.0004	0.00	0.83
N (total: 187)	98	89			

A.7 Procurement and Corruption

Politicians have the opportunity to skim money from public works funds at various stages of the procurement process. Summarized below are the key stages of the procurement process and how politicians take their cut, based on author conversations with key informants.

1. Private construction firms (contractors) get accreditation to qualify to bid on public works contracts. Either they are already politically connected or not.
2. Contractors who are not politically connected choose candidates to support (sometimes hedging their support on multiple, competing candidates).
3. Political candidates then win office. While mayors, governors, and council members have some influence over small public works contracts implemented within their jurisdiction, their influence do not compare to a legislator's. Contractors who have supported the campaign of the winning legislator stand to gain from such connection during procurement.
4. Legislators take office and begin efforts to legislate laws that come with public works funding, or to make congressional insertions in the annual budget.
 - Legislator inserts projects in the National Expenditure Program (NEP) budget
 - NEP is approved and becomes the General Appropriations Act (GAA; national budget)
5. Legislator works with the Department of Budget and Management (DBM) to release the funds to DPWH for the projects that have been funded under the approved annual budget. Funds are released in tranches.
6. The relevant District Engineering Office (DEO) prepares the project costing. DPWH initiates procurement process (e.g. Invitation to bid, bidding, notice of agreement, notice to proceed, notice of award).
7. First-price auction-style sealed-bidding is conducted. The process is sometimes rigged so that the contractor favored by the legislator wins the contract.
8. Contractors distribute side-payments as they receive funds, to all complicit players as follows (% of project budget):
 - Lawful payments:
 - 45-50% for actual project implementation costs
 - 15-20% profit for contractor
 - 9% government tax
 - Illicit payments:
 - 3-7% for congressperson: 3% for “vertical” projects (i.e., school buildings), 5-7% for “horizontal” projects (i.e., roads)
 - 2-3% for armed rebel groups in the area
 - 3% shared among losing bidders
 - 5-7% for DPWH personnel (mostly for district engineer, remainder shared by next 4 most senior positions in district engineering office)

A.8 Additional notes on data

ACLELED

News-based data sources are only as good as the source material fed to the coders. Every fatal drug war incident that takes place in the Philippines is not guaranteed to make its way into a newspaper, police press release or TV crime roundup, and thus could be missed by ACLELED. That said, the Filipino and international press have been very aggressive in reporting on the Duterte drug war. Drug-related fatalities regularly feature in front page articles in prominent domestic and international newspapers, wire services, blogs and websites. Local news sources are more likely to simply repackage police press releases about drug-related killings, but nonetheless almost always run a story. Fatal events are particularly difficult to suppress, because journalists know the public are very eager to read, see, and hear crime related coverage. Our view is that ACLELED's count of fatal drug killings is almost certainly an under count, but it covers an important subset of incidents in a way that is unrelated to the insider or outsider status of the mayor at the time. We also hedge our bets by using, as our primarily ACLELED outcome, a binary measure of whether there were *any* fatal incidents reported in a municipality during the period in question, rather than a count of all incidents (we include counts of fatalities in the Appendix). This separates the municipalities more sharply than comparing the number of incidents in the dataset.

DPWH procurement data

It is possible that information on civil works contracts reported online may be incomplete in ways that would bias our estimates. For instance, DPWH may be systematically under-reporting information on public works implemented in localities with non-LP mayors. However, this concern is allayed by the fact that the total value of contracts awarded annually in the data is roughly the same as the total annual amount reported in DPWH Annual Reports.⁴² Moreover, data on civil works contracts are stored in a centralized database in Manila, which is very unlikely to be influenced by any local government unit. Last, all civil works procurements are also reported on the Philippine Government Electronic Procurement System (PhilGEPS), which is controlled and managed by a different national government agency.

Even if the DPWH civil works contracts database is comprehensive, it is possible that details like the contract amount, the type of project, location, winning contractor or other details may be misreported in ways that would bias our findings. Fortunately, DPWH also makes available online the scanned PDFs of the official abstract of bids for every contract, bearing all the details of the contract as well as the signatures of Bids Awards Committee (BAC) members at the district engineer office (DEO) level. We randomly spot checked over two hundred of the bid abstracts to insure that they match the database, which they did in 95% of the cases. The remaining 5% had errors in the filenames or labeling, but not in the actual contracting information; thus we believe any measurement error to be classical measurement error uncorrelated with our treatment variable of interest.

⁴²<http://www.dpwh.gov.ph/dpwh/about/annual-report>